

BioSense III - T

Touch Key Fingerprint Access

- 400 sets of function key
- Anti pass back/ Anti duress
- Basic Time & Attendance
(First IN/Last OUT)
- Color screen with touch keypad
- LOGs data real time PUSH
- Indoor and outdoor use(IP65 certificated)
- Standalone, WEB-Based Management and network capability
- Support AUTO Get IP(DHCP) for easy setup



Specifications

GENERAL DATA

Software Application	SoMac/Browser/APP
Verification Mode	Fingerprint/Card/PIN
Proximity	EM/Mifare/HID
Fingerprint Template Capacity	9,590
Fingerprint Sensor Type	Optical
Fingerprint Sensor Resolution	500 dpi
1:1 Verification Time	<600 msec
1:1,000 Identification Time	<760 msec
User Capacity	10,000
Function Keys	400 SET
Time Sets/Time Zones/Group	255/120/255 SET
Holiday Dates	100 SET
Access&Event Logs/System Logs	65536/1536
Inputs	3 Inputs, (1)Exit button (2)Door Sensor(3)Fire Alarm
Relay Outputs	1 output for Lock(COM/NO/NC)
Web Base Management	Yes
Support real time log PUSH methodology	Yes
Wiegand Inputs	26/34 bits Wiegand reader
Wiegand Outputs	26/34 bits Wiegand reader
IP Mode	Static IP/AUTO IP(DHCP Client)

LED Indicators	Blue/Green/Red LED
Speaker Indication	Optional
Buzzer	Single Tone
TFT Color LCD	2.8"
Capacitive Touch Keys	4x4
Anti-Tampering Switch	Yes

COMMUNICATION DATA

TCP/IP	10/100 Base-T
Wiegand	26/34 bits

ELECTRICAL DATA & CONDITIONS

Power Consumption	500 mA ± 5%
Operation Voltage	9 ~ 24VDC/1A
Output Relay	30VDC, 1A
Operation Temperature	0°C ~ 65°C
Operation Humidity	5% ~ 80% RH

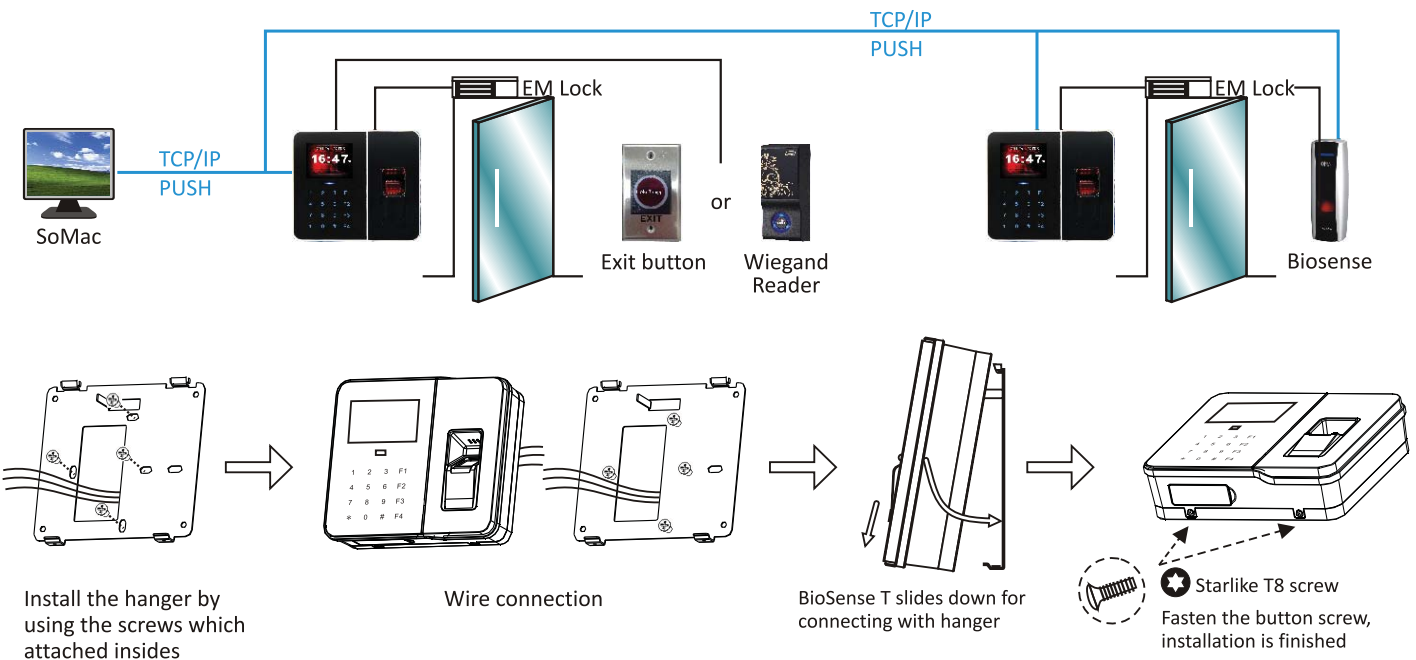
PHYSICAL DATA

Dimension	160.2x140.2x46.7mm
Weight	0.6 kg
Installation	Indoor/Outdoor(IP65 weatherproof)

INTERNATIONAL STANDARDS & WARRANTY

Certification	CE, FCC, ROHS
Warranty	2 Years (Fingerprint module: 1 year)

Structure



Ordering information

E: EM 125KHz M: Mifare 13.56MHz H: HID 125KHz