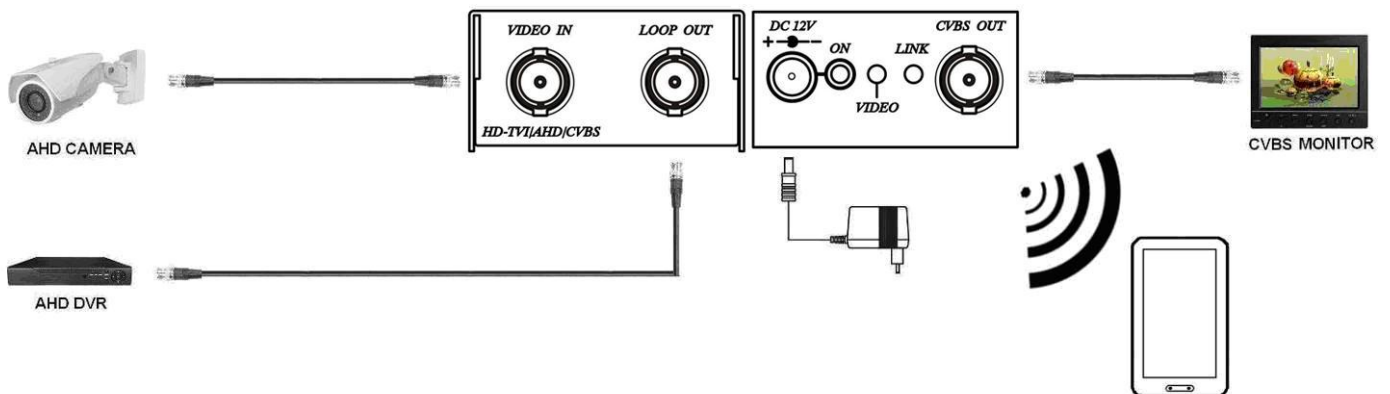


AHD/HD-TVI /CVBS Camera Tester Built in Composite Video Converter

ITEM NO.: AD001W AHD/HD-TVI /CVBS to Composite Video Converter with APP Viewer

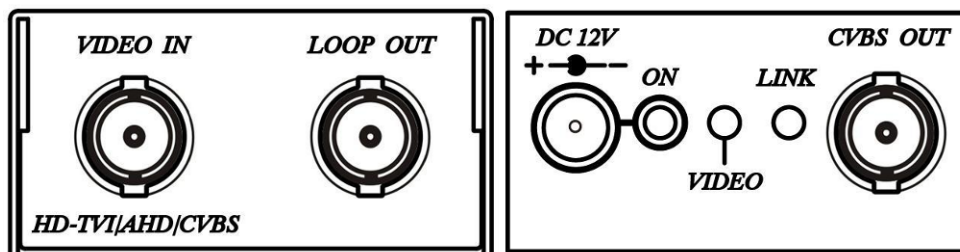


- Converts AHD/HD-TVI signal to Composite Video.
- As a AHD/HD-TVI/CVBS tester, built in Wi-Fi with APP viewer to allow user use mobile phone/pad to see the camera picture.
- APP support Android/iOS.
- Input support: NTSC, PAL, AHD/HD-TVI 720p@25/30, 720p@50/60hz, 1080p@25/30Hz.
- Output support: CVBS (Composite video), AHD/HD-TVI loop out, Wi-Fi simultaneously.
- Package included a Y cable to allow the power source from camera DC12V power adapter.



Panel View:

AD001W



LED Indication:

- | | |
|-------|--------------------|
| Green | Power ON/OFF |
| Blue | Input video locked |
| Red | Wi-Fi linking |

Android APP function:

APP name: HD CCTV Camera Wi-Fi Viewer 2



System Requirement

Android 5.0 or later

Size: 36.9M

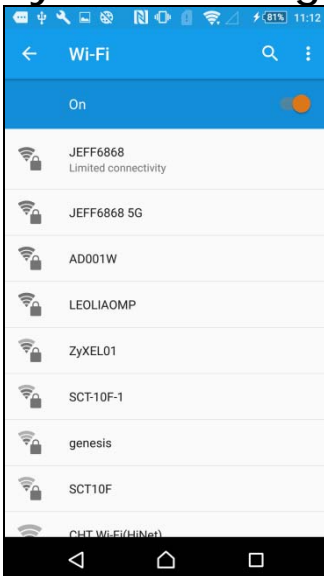


Google Play Download QR code

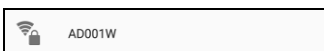
Google Play Download Link

https://play.google.com/store/apps/details?id=sct.cctv_view

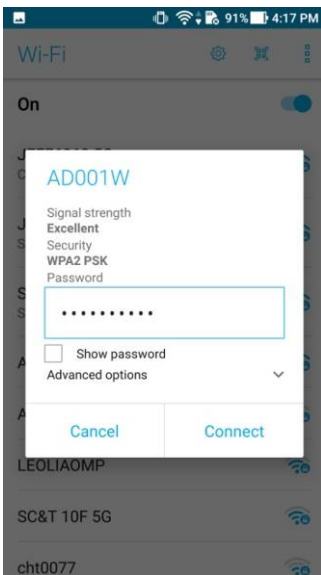
System Setting



Connect your mobile phone/pad to AD001W at Wi-Fi setting page.



Touch AD001W



Enter password to connect, default password is **1234567890**



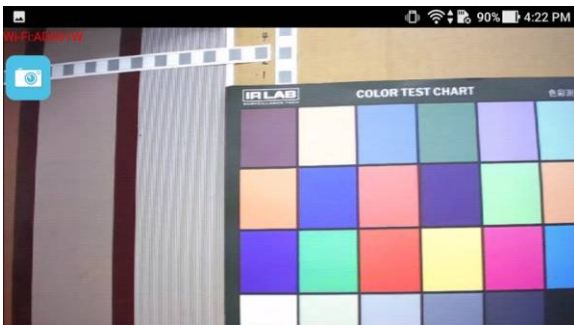
It will show Connected if connection established

Notice: only 1 device can be connected at the same time.

APP Operation



Touch SctCam icon on desktop to run APP



Touch top left camera icon to capture picture

Troubleshooting

If you see black screen and show no Wi-Fi connection or the SSID name is not AD001W, please close the APP and connect to AD001W then run the APP again.

APP name: HD CCTV Camera Wi-Fi Setting



System Requirement

Android 5.0 or later

Size: 36.85M

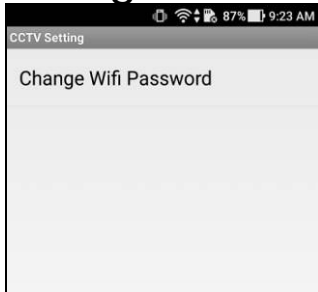


Google Play Download QR code

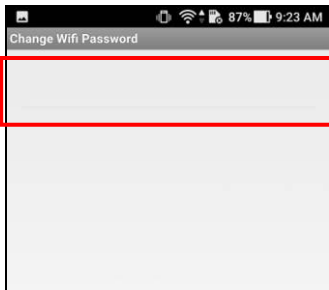
Google Play Download Link

https://play.google.com/store/apps/details?id=sct.cctv_setting

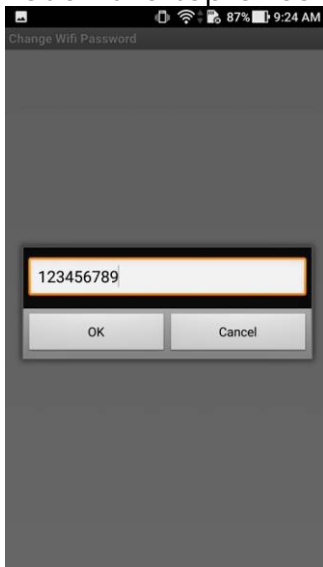
Change Password



Touch "Change Wifi Password"



Touch the top of column



Enter the password and touch OK to confirm.

Notice: password will be changed immediately.

iOS APP function:

APP name: HD CCTV Camera Wi-Fi Viewer 2



System Requirement

iOS 10.2 or later

Size: 8.9M

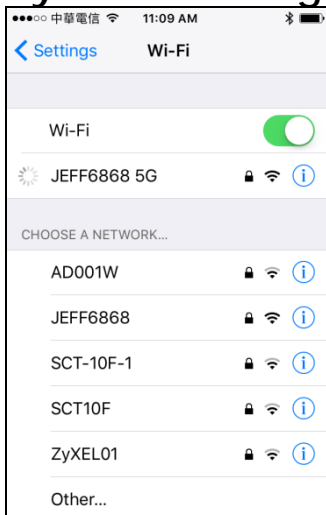


iTunes Download QR code

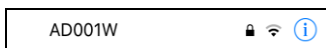
iTunes Download Link

<https://itunes.apple.com/us/app/hd-cctv-camera-wi-fi-viewer-2/id1356941265?l=zh&ls=1&mt=8>

System Setting



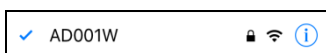
Connect your iPhone/iPad to AD001W at Wi-Fi setting page.



Touch AD001W



Enter password to connect, default password is **1234567890**



It will show Check icon if connection established



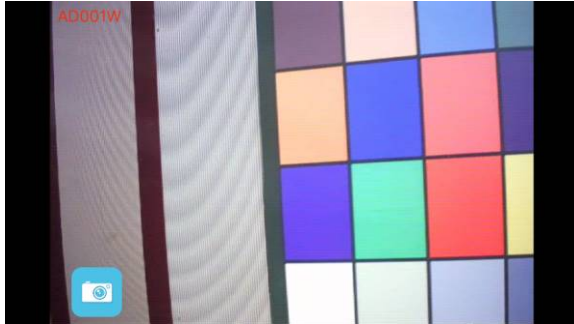
It will show No Internet Connections after connected

Notice: only 1 device can be connected at the same time.

APP Operation



Touch CCTVView icon on desktop to run APP



Touch bottom left camera icon to capture picture to your photo album.

Troubleshooting

If you see black screen and show no Wi-Fi connection or the SSID name is not AD001W, please close the APP and connect to AD001W then run the APP again.

APP name: HD CCTV Camera Wi-Fi Setting



System Requirement

iOS 10.0 or later

Size: 8.0M

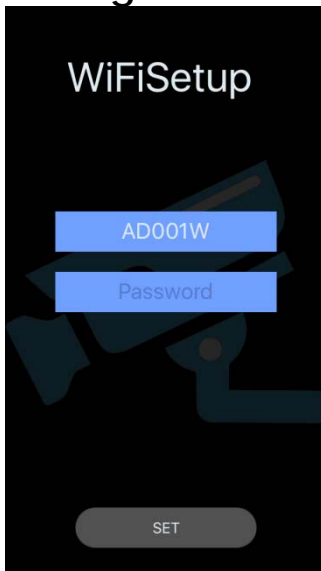


iTunes Download QR code

iTunes Download Link

<https://itunes.apple.com/us/app/hd-cctv-camera-wi-fi-setting/id1358548335?l=zh&ls=1&mt=8>

Change Password



Enter new password in "Password" column.

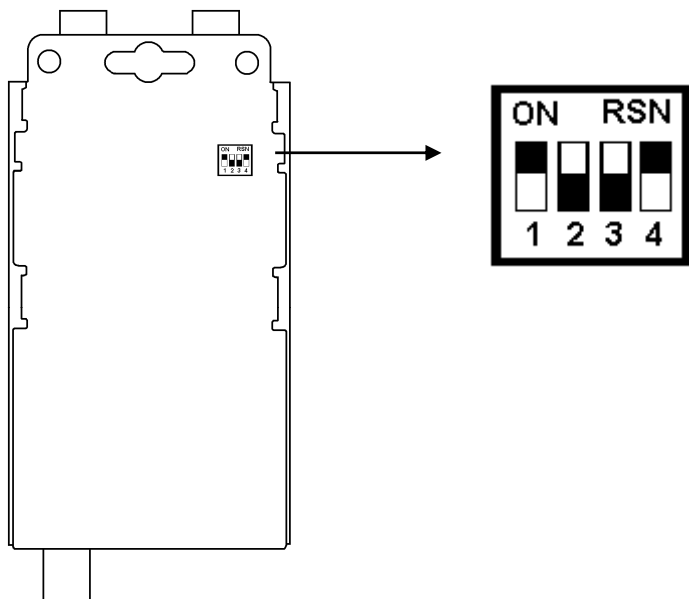


Touch "SET" to change password

Notice: password will be changed immediately.

Dip Switch :

AD001W Dip Switch View



DIP Switch 1: HD/SD video source selection (Default ON), need reboot after change

ON: HD mode for HD-TVI/AHD camera

OFF: SD Mode for CVBS (Composite Video) camera

DIP Switch 2、3: Reserved (Default OFF)

No function

DIP Switch 4: ISP function (Default ON), need reboot after change

ON: Normal mode

OFF: ISP Mode for firmware update

Caution

1. Before use Y cable with camera's power adapter, please make sure the power adapter is enough for camera use plus additional AD001W requested power DC12V 350mA.
2. AD001W support 2.4GHz Wi-Fi only, if your cell phone do not support 2.4GHz Wi-Fi that you will not see it in AP list, please check the specification of your mobile phone.

Specification:

ITEM NO	AD001W
Video Support Resolution	NTSC, PAL, AHD/HD-TVI 720p@25/30, 720p@50/60hz, 1080p@25/30Hz
Video Input Connector	BNC x 2
Video Output Connector	BNC x1
LED Indication	LED x 3 (Green, Blue, Red)
Power Supply	DC12V From camera power adapter
Power Consumption	350mA (Max) 4-5 Watts
Temperature	Operation: 0 to 55℃, Storage: -20 to 85℃, Humidity: up to 95%
Dimension (mm)	49.2 x 111.4 x 25
Weight (g)	160

RoHS CE FCC

Rev. A 2017/12/29