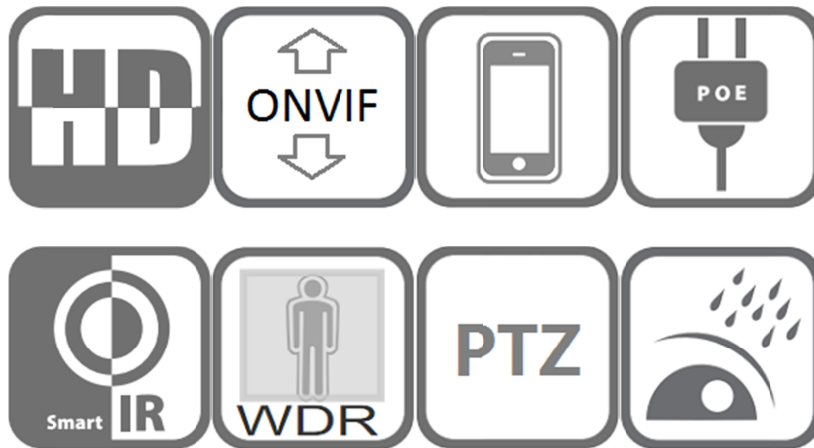
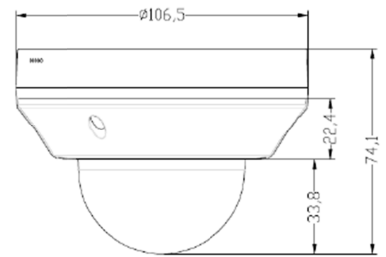




Model: **ON-716IR-3X-V4**

## 5 MP H.265 IP Mini 3X Zoom Dome PTZ IP Camera



### Features:

- ❖ 1/2.8" Sony IMX335 Low light CMOS sensor
- ❖ Low illumination 0.01Lux
- ❖ Day/Night (ICR), AWB, 2D/3D-DNR, IR-CUT
- ❖ D-WDR, Motion Detection, Privacy Mask, Mirror, Flip
- ❖ Human Detection, Vehicle Detection
- ❖ RTSP and Onvif 17.06 compatible
- ❖ H.265/H.264 dual-stream media server, Max.5MP HD output
- ❖ Ultra low bitrate and high image quality
- ❖ Easy-to-use P2P Cloud service
- ❖ Multi web browser, PC Client, mobile APP remote access
- ❖ Optional Micro SD Card slot/Wall mount bracket, etc.
- ❖ Lightning protection 4000V

- ❖ 3PCS SMD Array IR LEDs, IR Distance 20-30M
- ❖ 2.8-8mm Motorized Auto Focus lens
- ❖ 300° horizontal rotation, 90° vertical range
- ❖ Rotation speed :0.5°~15°/s
- ❖ Built-in Microphone, Reset button

## Technical Specifications:

<b>Model</b>	<b>ON-716IR-3X-V4</b>
<b>Camera</b>	
Image Sensor	1/2.8" Sony IMX335 CMOS
Effective Pixels	2592(H)×1944 (V)
Electronic Shutter	AUTO, 1/25s ~ 1/100000s
Min. Illumination	0.01Lux@F1.2(AGC ON), 0Lux IR on
Day/Night	Auto/Color/(B/W)/Timing
WDR	Digital WDR
White Balance	Auto
Other	AGC,2/3 DNR,Motion Detection, Privacy Mask, Mirror, Flip
<b>Encode</b>	
Embedded Solution	Mstar SSC30KQ
Video Standard	H.265/H.264
Video Resolution	Main Stream: 25fps@5MP(2592x1944), 30fps@4MP/3MP/1080P/720P
	Sub stream: D1/VGA(640x480)/360P/QVGA@25fps
Video Bitrates	512Kbps - 6Mbps, VBR/CBR
Built-in Mic	Yes
Smart Event	Human Detection Vehicle Detection Motion Detection
<b>IR Led</b>	
IR Led	3 pcs SMD Array IR Leds
IR Distance	30 M
<b>Lens</b>	
Focal length	2.8-8 mm AF Motorized lens
Zoom	3x optical zoom
<b>PTZ</b>	
Pan/Tilt Range	Pan: 0° ~ 350°; Tilt: 5° ~ 90°
Manual Control Speed	80°/Sec
<b>Other Function</b>	
POE	Internal POE

Reset	Cable with reset button
<b>Network Services</b>	
Protocol	RTSP/FTP/DHCP/DDNS/NTP/SMTP/NFS
P2P	Yes
Web	IE , firefox 32bit ESR
Media	CMS, Android, IOS
ONVIF	17.06 compatible
<b>General</b>	
Network Port	1-RJ45, 100Mbps, POE optional
Power Supply	12 VDC $\pm$ 10%
Power Consumption	< 5 W
Operating Temp.	-30°C-(+60)°C , 10%-90%RH