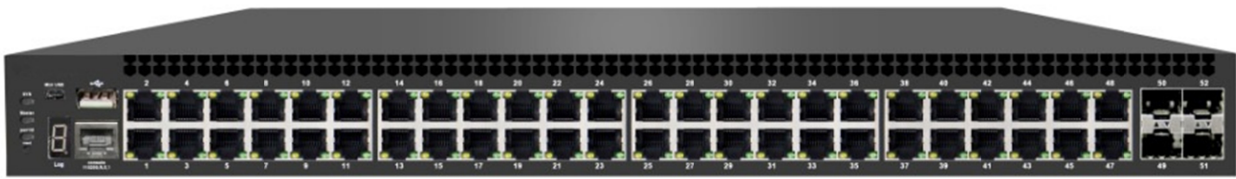




Model : ON-S5700-48GP-4TFR

48 * Gigabit Port + 4 * 10G SFP Port +1 * Console Port + 1 * Mini-USB

Console port +1 * USB 2.0 (300W) Layer 3 Managed PoE switch



Product introduction

ON-S5700-48GP-4TFR is the next generation data center level 10G Ethernet switch products, For construction the campus network aggregation layer or access layer and small and medium-sized enterprise core network, provide high reliability, high performance and manageability of new intelligent network solutions. Provide 48 gigabit RJ45 ports and 4 SFP + uplink ports. Support Port speed, IGMP Snooping, broadcast storm control, Port -based VLAN , MAC address binding , the configuration file uploads and downloads , and other functions , Offers a lot of flexibility on the improve group performance.

Main feature

- Support IEEE 802.3, IEEE 802.3u, IEEE 802.3ab , IEEE 802.3az standard.
- Full duplex with IEEE 802.3x standard, using the standard Backpressure half duplex
- 4810/100/1000M POE port, support Auto MDI/MDIX.
- 4 SFP+ uplink ports
- Support IGMP SNOOPING (V1/V2) , Maximum support 256 group.
- Support 16K MAC table.
- Support 802.1Q VLAN and Port Based VLAN
- Support VLAN, port mirror, spanning tree, ACL software functions, etc
- Simplified WEB management UI, makes the user does not need to master too much professional knowledge can be easily to configure the switch
- Internal power supply, 1U steel shell, 19 inch of the standards frame structure , industrial design.

Specification

standard configuration	4810/100/1000M RJ-45 MDI/MDI-X ports, 4 gigabit SFP+ ports
Flash	NAND Flash (128M) and NOR Flash (8M) at the same time
SDRAM	512MB
transmit rate	130.9Mpps
backboard bandwidth	176Gbps
swap mode	Store-and-Forward
MAC address table	16K
Dimension	440*315*44 (mm)
power supply	Input AC100-240V Auto,50-60Hz, Output12V/6.6A
Lightning protection	Port lightning protection ability: common mode 6 kv
Energy conservation design	3 Fan
LED light	status、Link/Act、10G
environment	0-50℃ operation,-40-70℃ preserve、
temperature/humidity	Operation:10%-90% RH,storage:5%~90%RH
Operation altitude	-500m~5000m
VLAN	port base VLAN、MAC base VLAN、protocol base VLAN ACCESS VLAN TRUNK VLAN HYBRID VLAN Super VLAN 802.1Q tagged VLAN Management VLAN can modified to other VLAN
MAC address administration	MAC address display/inquire Supports 256 static MAC Dynamic MAC address administration MAC address filtering
IGMP Snooping	IGMP Snooping IGMP v1/v2/v3
ACL	IP standard acls MAC extended ACL IP extended ACL VLAN -based ACL Based on the 2 layer interface (physical interface/AP) ACL associated
Security feature	Port isolation in VLAN Port + MAC + IP binding
Port Mirroring	- One-to-one - Many-to-one - One-to-many Mirrored port of sending, receiving and sending, receiving data
storm control	Broadcast/Multicast/Unknown Unicast Storm Control
Port speed limit	egress and ingress port speed limits, speed limit exports size 64 Kbps
DHCP Snooping	Prevent illegal DHCP server, support DHCP trust port
Loop detection	Support loop detection

STP Protocol	IEEE802.1d STP IEEE802.1w RSTP standard 802.1s MSTP
ARP attack prevention	Prevent the ARP request deception Prevent the ARP reply cheat
Jumbo frames	Max to forwarding 9K bytes Ethernet packets of port
QoS	Hardware queue number: 8 802.1 p, DSCP tag SP WRR SP + WRR Based on the flow speed limit size 64 Kbps
SNMP	SNMP v2c;conform to RFC1902, RFC1903, RFC1904, RFC1905, RFC1906, RFC1907 The MIB II;conform to RFC1213 Ethernet MIB;conform to RFC1643 The bridge MIB;conform to RFC1493
RMON	Support group 1, 2, 3, 9
Network management	Console Telnet The CLI interface WEB UI Support the ping Check the CPU and memory utilization