

## Wireless Battery Video Doorbell

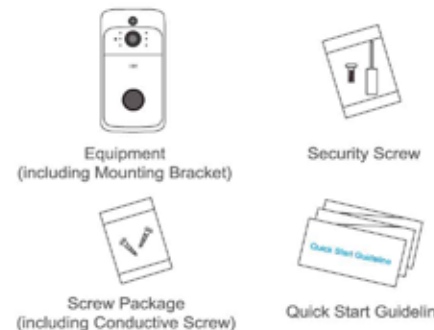
### Quick Start Guideline

\* Please read it carefully before using the product, and safekeeping

V6.1

## Packing List

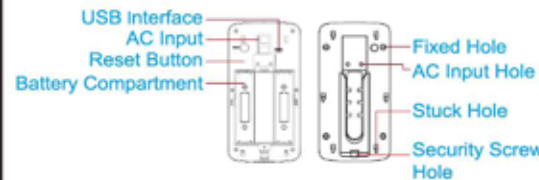
After opening the package, please make sure the doorbell (hereinafter referred to as the "Equipment") is in good condition verify parts below is complete.



## Appearance Introduction



- IR LED** The ambient light is not enough, to enable the infrared light, increase the environmental brightness
- Light Sensor** Used to collect environmental brightness value, when the intensity of illumination is less than 2 Lux, enable the IR LED
- MIC** Audio capture
- Button** The doorbell button
- PIR** When human body movement in front of the equipment, the equipment could made the notification to your mobile phone.
- Lens** Video image capture
- Indicator Light** Blinking blue: configuration status;  
Long red light: failed to connect wifi;  
Blue light is on: the device is connected successfully  
Red and blue light together: The device is connected to WIFI
- Speaker** Make a sound of the equipment, and voice intercom



- AC Input** Power is supplied to the equipment by installing the AC input supply hole on the mounting bracket.
- Reset Button** Equipment working status, long press 5 seconds to restore factory settings
- Battery Compartment** Mounting 18650 specification battery.
- Fixed Hole** Fit the support on the wall with the mounting screws for the mounting kit.
- AC Input Hole** The power supply of the equipment can be supplied by connecting the hole and the AC power supply on the wall
- Stuck Hole** Mounting the equipment onto the bracket
- Security Screw Hole** Mounting the security screw on the fittings to prevent the equipment from being removed

## Installation Guide

As shown in the figure, take back



- Use the screws in the mounting kit to fit the bracket on the wall
- Connect the external power cord to the AC external power supply hole



## Setup Device

Thank you for choosing our products! Please follow the below instruction to setup and using your doorbell device.

### 1. Downloading and Installing the App

## i-Cam



### 2. Setting up the App

- Before you begin...
- > Make sure the "XSH cam" app is installed to your device.
- > Make sure that your device is connected to a 2.4GHz Wi-Fi network, NOT a 5GHz network.

### Add the camera

- Launch the "XSH cam" app on your device and tap Add a Camera.



### Setup the Camera

- Select Setup Camera. Note: If you have multiple cameras, only setup one at a time.



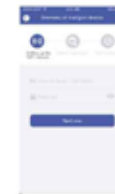
- Before setup, make sure the device is in configuration --- with a voice prompt "The camera is now ready to begin pairing".



- If you didn't hear the voice prompt, press and hold the reset button for 5 seconds. Release after the LED indicator turned off, and the device will restart to configure automatically.



- The name of the Wi-Fi network will automatically be filled in, enter the Wi-Fi password. And adjust the volume of your device to a reasonable level then tap "Next". The APP will fill the corresponding password automatically if connected with the same Wi-Fi, and you don't need to fill the password again.



- The mobile device will emit sound waves, keep quiet and make sure about 30cm distance between the phone and the device, and waiting for the device to configure the network. If your camera fails to connect, reset the camera and repeat all the steps (please see the previous section, Resetting the Camera)



- After a successful connection, you will be prompted to create a name and password for your camera. The password must be at least 8 characters and include an uppercase letter, a lower-case letter, and a number.



- Setup completed! The APP will be entered the device list interface automatically. Congratulations! The device is ready for use.



Note: In crowded environment, it is recommended to close or set the device to low sensitivity to reduce device arousal and call times to extend battery life.

### 4. Note for using

- The device is powered by rechargeable lithium batteries. With fully charged, the battery life approx be six months. The mobile device APP will be prompted while the battery voltage is low. Please charge the device after received the reminder.
- Keep the camera in range of your router. Thick or insulated doors can greatly reduce the strength of your Wi-Fi signal even if your router is close by, so you should try streaming video before you mount your camera.
- The device is a low power consumption intelligent products, can support remote wake up from the APP, PIR human detection, press doorbell wake up. The device will be works for 30 seconds after wake up then be in the resting state automatically and until to next waking up.

### 3. The Wi-Fi Doorbell Features

In the device list section, please click settings icon which at the top right corner to enter the device settings.



### Accept call

Turn on - Receive the notification if somebody press the doorbell or call out.  
Turn off - Will not receive the notifications for accept call.

### Share QR Code

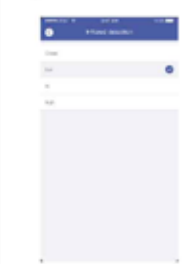
Send the QR code to share the device to your friends and family or someone that you want to share.

### Delete camera

The mobile device will not receive the notifications after you delete the camera. But the camera still works and the other connected mobile devices still able to receive the notifications.

### PIR Detection Instructions

The device can support the PIR detection. Tap "PIR detection" to open the submenus.



### Disabled - Close the PIR function.

Low - The device will be able to wake up after device detects human for 7 seconds. Device start to take videos and call the mobile device at the same time.

Medium - The device will be able to wake up after device detects human for 5 seconds. Device start to take videos and call the mobile device at the same time.

High - In the state, the device will be able to detect if keep the state what be detected at least 1 second, and the device start to take videos and call to phones at the same time.

## Technical Specification

Resolution	1920x1080
Field of Angle View	166°
IR LED	6*850mm
Wi-Fi	IEEE 802.11 b/ g/ n
Audio	Two-way talk with noise cancellation
Recording	Device SD Card recording(20 seconds)
Storage	8G/16G/32G
Battery	Two 18650 specification batteries
Monitoring	Device Button, Motion Detection, Remote Live View
Notifications	Push Notifications within 1 second
Device Wakeup	Within 600 ms
Power Consumption	Power Consumption Standby 200 uA, Working 170 mA

- Two 18650 specification batteries (total 6800 mAh), work regularly for 6 months.

## Ding-dong Pairing

(Needs to be purchased separately)

Code Pairing: 1. Short press the button of Ding-dong responder, indicator light is always on

2. Press the button of doorbell to make the code successful

Reset: 1. Press the button of Ding-dong for 5 seconds.

Number of connections: 1 Ding-dong can connect with 12 Doorbells;  
1 Doorbell can connect with unlimited amount of Ding-dongs.

## Function Introduction

- Two 18650 specification batteries work regularly for 6 months
- Million HD pixels collocated with wide-angle lens
- Support mobile phone remote fast wakeup device within 1 second.
- 2.4G Wi-Fi connection
- High quality two-way talk with noise cancellation
- Support PIR motion detection, when someone hovers at the door, immediately alerts push notifications to the mobile phone.
- Day and night mode automatic switching, whether day or night, the image is clearly visible, provide you a safe environment