



FAQ: How to erase ON-FP8032
administrator password

```
graph TD; A[Operation Start] --> B[Using the accompany USB cable from ON-FP8032 to the computer (STEP 1-5)]; B --> C[Open the fingerprint recorder Attendance software, start adding fingerprint controller (STEP.6-10)]; C --> D[To Clear the selection in the attendance software administrator's Fingerprint recorder for deletion (STEP.11-15)]; D --> E[Clear Administrator Password Success];
```

Operation Start

Using the accompany USB cable from ON-FP8032 to the computer (STEP 1-5)

Open the fingerprint recorder Attendance software, start adding fingerprint controller (STEP.6-10)

To Clear the selection in the attendance software administrator's Fingerprint recorder for deletion (STEP.11-15)

**Clear Administrator
Password Success**

FAQ:How to erase ON-FP8032 administrator password



The example illustrates:

When the ON-FP8032 configure a administrator in the personnel data, if there is no "admin." fingerprint, card number or password will not be able to enter the settings do, the following will guide the administrator password release to the software

Instructions: Using the accompanying USB cable from ON-FP8032 to the computer



1 :When the ON-FP8032 have set a administrator in the personnel data, when press "MENU" button, the fingerprint recorder screen will show " Verify Manager"

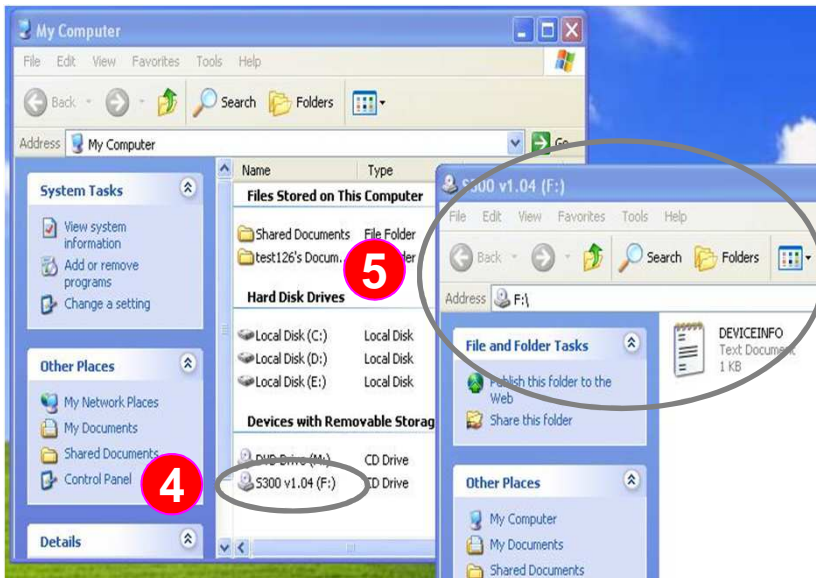
2 :Please identify the USB cable included with the product (such as lower-left photo)

FAQ:How to erase ON-FP8032 administrator password



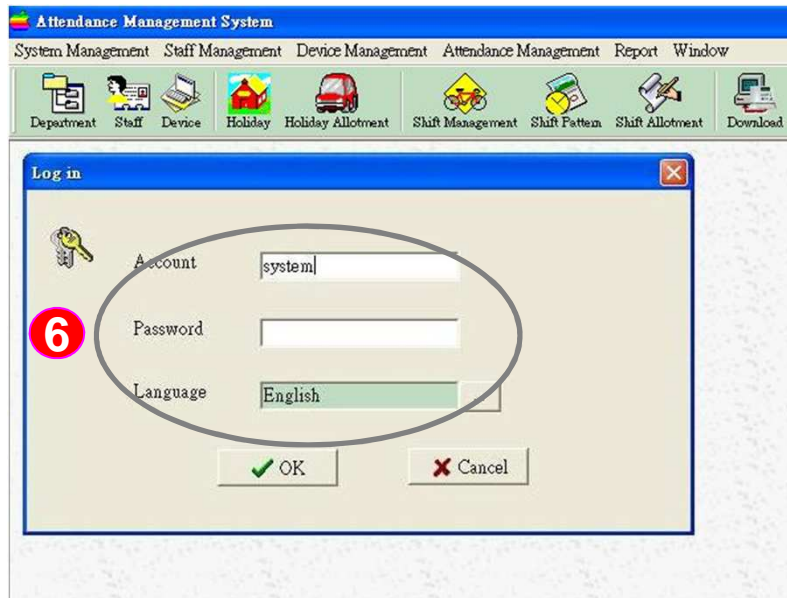
Instructions: Using the accompanying USB cable from ON-FP8032 to the computer

3 : Use the mini-USB tip into the fingerprint recorder (such as top-left photo)



4 5 : Connect the other end of the standard USB plug into the computer, and turn on the fingerprint recorder power supply, the computer can find the correct fingerprint recorder

FAQ: How to erase ON-FP8032 administrator password

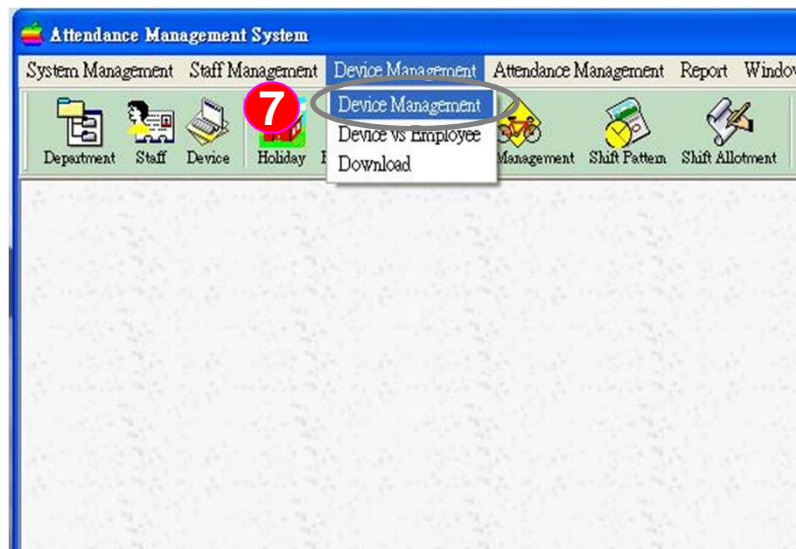


Instructions: Open the fingerprint recorder attendance software, start adding fingerprint recorder

- 6** : Installing the fingerprint recorder attendance software CD then open the program, enter the username and password to login

Account name: system

Password: (Without entering)

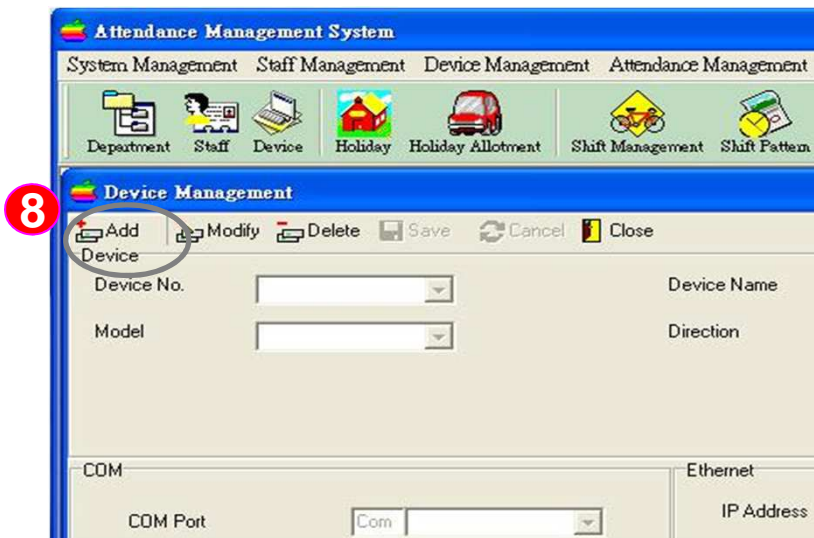


- 7** : Click the menu " Device Management" and drop-down display window then click " Device Management "

FAQ:How to erase ON-FP8032 administrator password

Instructions: Open the fingerprint recorder attendance software, start adding fingerprint recorder

8 : Please click " Add " to increase device



9 : Because we use USB to connect, set values are as follows

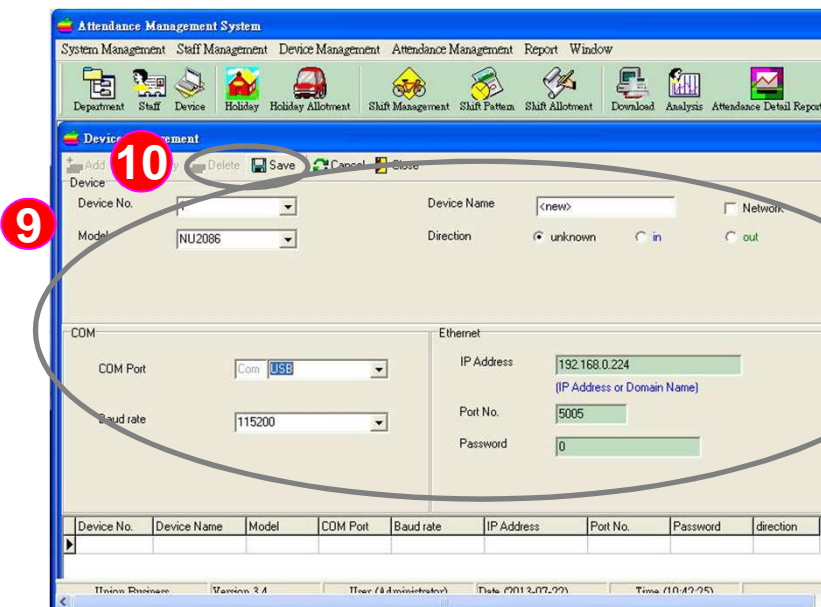
(1)Device No.: Please select the same as the fingerprint recorder

*Note: device number to the fingerprint recorder can press the "MENU" button, click "Settings",go to "Communication Settings" conduct "device number " setting

(2) Model: please select" ON-FP8032 "

(3) COM Port: please select "USB"

(4) Baud rate: Please select "115200"

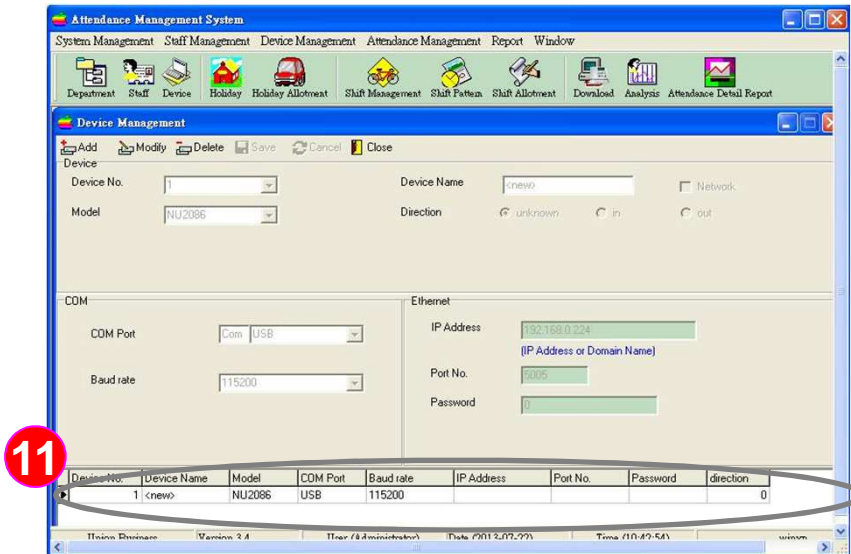


Note: In addition via USB, gray box in the upper right corner can also check the "Network" to another over TCP / IP settings and connections

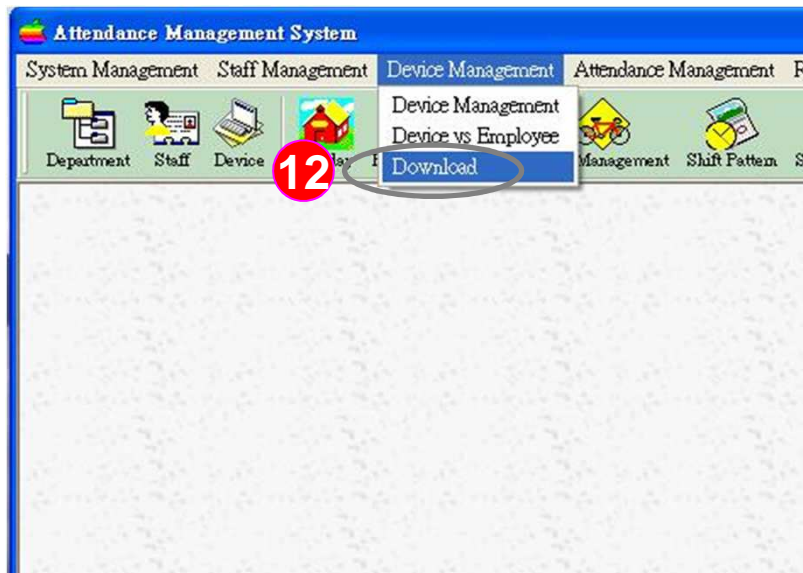
10 : Press " Save" to save the setting

FAQ:How to erase ON-FP8032 administrator password

Instructions:To clear the selection in the attendance software administrator's fingerprint device for deletion



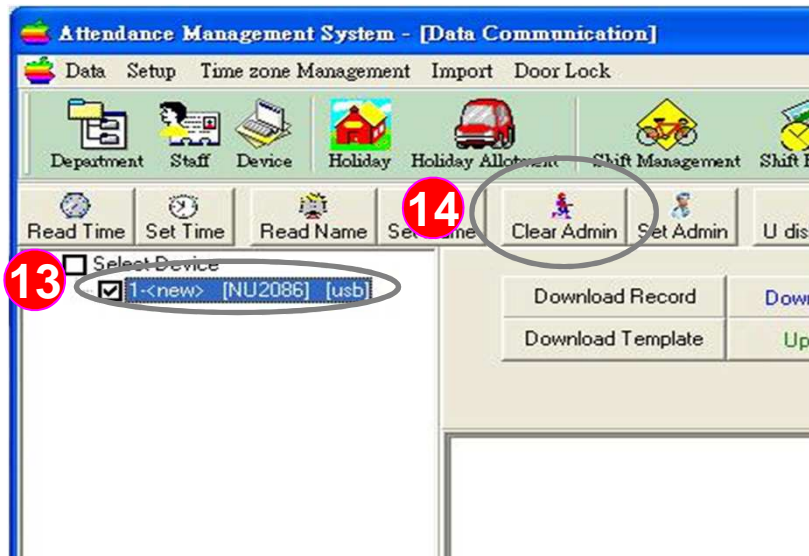
11 : At this point can be found in fingerprint recorder has been added to complete



12 : Click the menu " Device Management" and drop-down display window then click " Download"

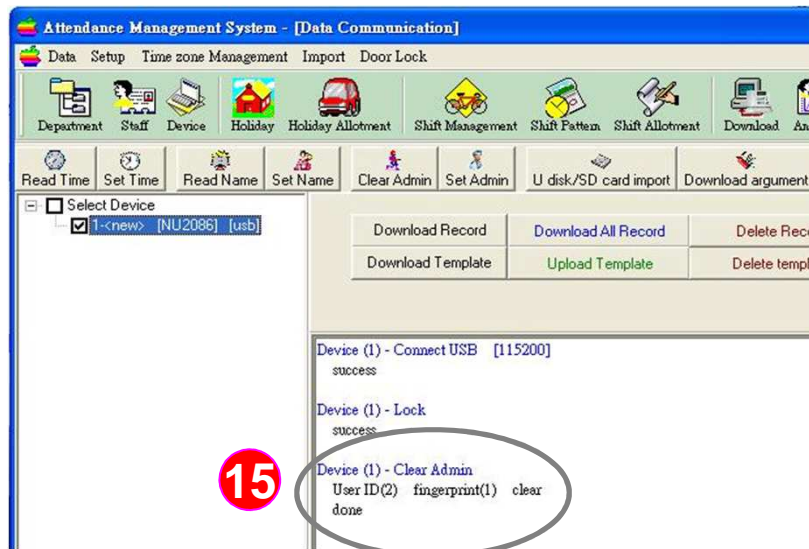
FAQ: How to erase ON-FP8032 administrator password

Instructions:To clear the selection in the attendance software administrator's fingerprint device for deletion



13 : Click on the added device

14 : Please click the "Clear Admin" button



15 : Then you can see the message "Clear Admin - clear done", it means that the software clears the administrator completely.