

Quick Start Guide

1080P USB Power Charger Operation Manuals



Thank you very much for your interesting and purchasing, your every support and advice is our motivation! In order to let you use our service, please read the manual carefully before using.

For you ! Do one thing. Made good product, just take care of your life.

To get started, you need:

A wireless router, its network name, and password if necessary. (router only accepts 2.4Ghz, network name and password only accepts number and letters)

A smart device, such as an Android Smart Phone or tablet (Android version 4.0 or later) or an iPhone, iPad, or iPod touch (iOS version 6.1 or later).

1. Location or Controls



The Power Charger can charge electronic equipment directly and monitor at the same time.

Blue led is the power indicator, red led is WIFI

a. P2P mode : red led flashes slowly

b. Remote IP Mode: red led flashes quickly

Once you have configured remote ip mode, it is always red light. Under any mode, the camera can be reset to P2P Mode.

Note: Press the reset key about 5 seconds until all lights go off, the camera boots up again, it resets successfully (about 30 seconds)

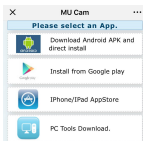
2. APP Download



MUCAM



picture 1



picture 2

Scan the QR (picture 1) code directly to the download interface (picture 2). Select and download software according to your mobile phone system.

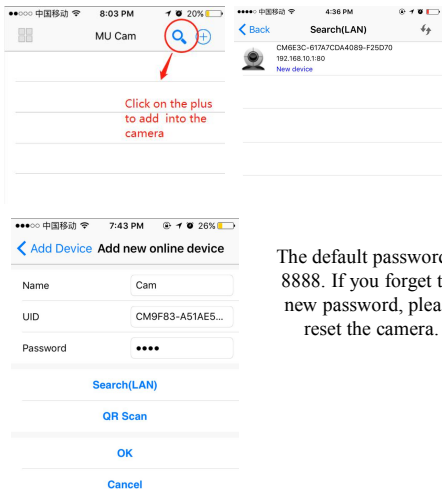
You can also download the App "MUCAM" from Google Play Store (for Android) or Apple Store (for iOS).

3. P2P mode connection

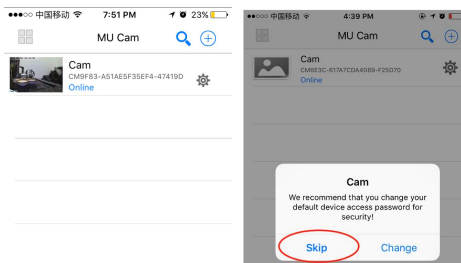
Connect directly by Point-to-Point (hotspot) when your smart phone is near. In this way, it can't support viewing real-time video remotely. Enter the phone setting where WIFI signal inside, Find the signal(It is the machine UID number unique to each machine) and the connect it. As the pictures showing below:



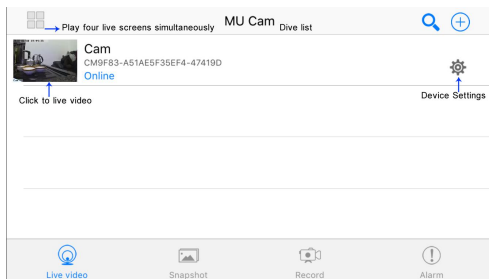
Then Open the phone App (mucam). This signal is the machine' s UID which is different from each machine, click on the icon “ 🔍 ” to add into the camera as shown below

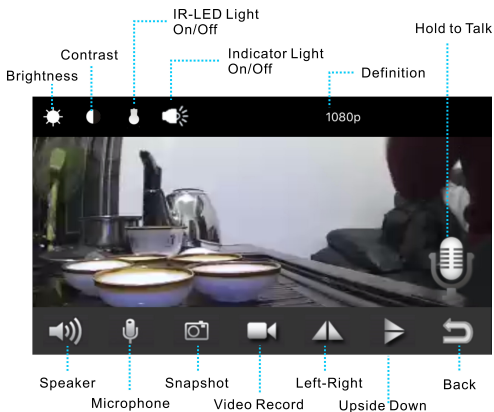


The default password is 8888. If you forget the new password, please reset the camera.

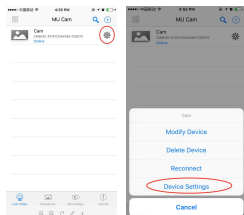



Click to go online camera appears as shown.

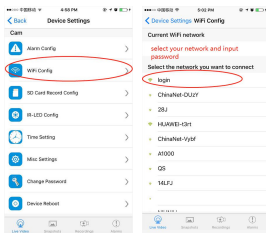




4. Remote IP mode connection

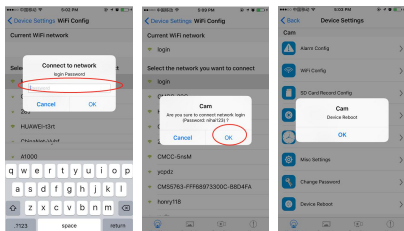


Click on the small gear  enter advanced configuration shown below



Find the installation location of the signal router, configure the camera to enter the password into the router as shown below

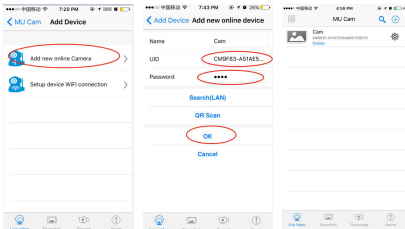
Note: If your router releases 2.4 and 5.0Ghz dual Wi-Fi, Please select 2.4Ghz only . Network name and password only accept number and letters.



Waiting for the camera to complete restarting. It takes about 40 seconds. Camera will restart, then the camera will show online, You can remotely access, and when the phone wifi and cameras in the same network which is a local area network, or any other phone connect to the 4G wifi cell phone signal APP will automatically reconnect the camera after a successful connection. You can watch the video.

5. Add new online Camera

If the camera has already connected to network (remote IP Mode),you need to select “add new online camera” to add the online camera to your smart phone as shown below



Input the UID number (you also can scan the camera QR Code to get the UID number), then Input new password if changed! The default password is 8888. If you forget the new password , please reset the camera . Click “OK” to add camera to the device list

6. Computer Software Download

Open Link:

http://112.124.40.254:808/app_dwn/MuCam.html

download and install the software

IP Camera Search Tool (only work in same area network)

IPCMultiView




7. Add Camera to IPCMultiView

Camera must be connected to network first.(More details, please refer to page 3&5).

Run IPCMultiViewSetup_EN on your Computer.

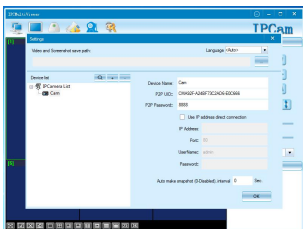
The Username is “admin” and NO password is required.

7.1. Click “Camera Setup” or  to add camera to PC.

7.2. Click “+”, input the camera name, camera’s UID (Located at the bottom of camera), and password (Default password is 8888), then click “OK”.

7.2.1. If the camera and PC is in LAN, just click to search the camera’s UID, then click the camera’s UID and “OK”.

7.2.2. Click “-” to delete camera from the device list.

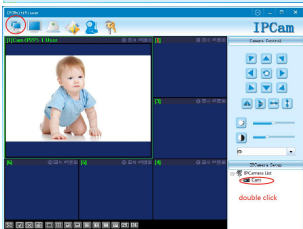


7.3. Double click the “camera name” at the bottom right corner

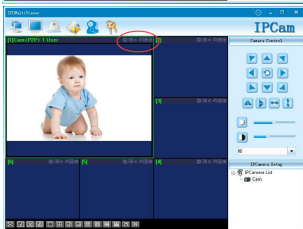


or to connect

the camera.



7.4. After connecting, click these icons to use the camera functions
Click “Settings” icon to finish settings:



8. Add Camera to IP Camera Search Tool

View in Web Browser

Camera must be connected to network first.(More details, please refer to page 3&5).

Make sure the Mac and camera are connected with the same Wi-Fi.

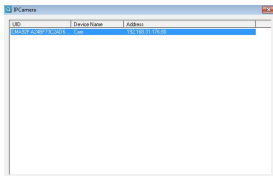
Run IP Camera Search Tool on your computer.

Click “IP Camera Search Tool” icon.



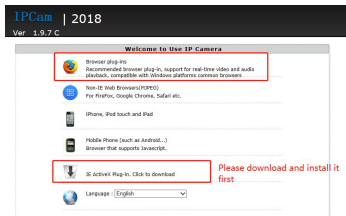
You can see the camera item list in the camera list. You can visit camera only in the local area network (LAN) on Mac.

Double click “IP address” ,The Username is “admin” and no password is required.




If your PC does not install the player plug-ins, please click to download and install.

After install the player plug-ins,Click “Browser plug-ins” you can view the camera real-time video in Mac by Website.





You can also click the settings icon  to sets more information.

9. Specification

Pixel	2.0 MP
Video Resolution	1080P/720P/VGA
Frame	25
Visual Angle	90 degree
Motion Detection Shooting	Straight line 6 meters
Compressed Format	H.264
Recording Range	5 m ²
Storage Temperature	-20-80 degree centigrade
Operating Temperature	-10-60 degree centigrade
Operation Humidity	15-85%RH
Memory Card Type	Max 128GB (Fat.)
Player Software	VLCPlayer/SMPlayer
Mobile Phone Operating System	Android / IOS
Computer Operating System	Windows/Mac OS X
Web Browser	IE7 and above , chrome , firefox safari ,etc.
Largest Customer	4

10. FAQ

10.1 Q: What is Micro SD Card Required for Recording? Why I Can't Use My Micro SD Card for Recording?

A: The camera supports up to 128 GB Micro SD card(Please use High Speed Class 10 Fat formatted memory card .Original Sandisk and Kingston brands are most preferred). You must format the Micro SD before using . If a SD card is not recognized when insert into camera, please remove it and insert again.

10.2 Q: Why does my computer or security software say the software is dangerous and it is a virus?

A: The software will detect device in your network, and it seems like a virus. Please ignore the warning and continue.

10.3 Q: Why the camera can't go online?

A: 10.3.1. Check if your Wi-Fi setting is correct or not, proper password may be needed.

10.3.2. Check if your router is working properly or not.

10.3.3. Check your signal, your device may not be connected to Wi-Fi due to weak Wi-Fi signal.

10.3.4. Please check your network name and password name to see if it includes special symbols.

10.4 Q: How can I record videos in the Micro SD card.

A: Insert a memory in the camera and open the setting menu to set sd card video recording .

10.5 Q: Why remote monitoring is not smooth

A: You should choose suitable resolution to watch according to your internet

10.6 Q: Why my sd card cannot save

A: SD Card must be formatted if this is your first time to use

10.7 Q: How to find my password

A: To press reset key with 10 seconds and restore the factory setting