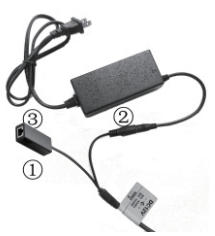
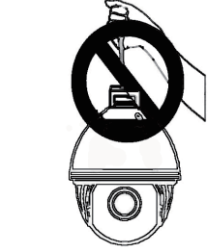


HD-IP Speed Dome Quick User Manual

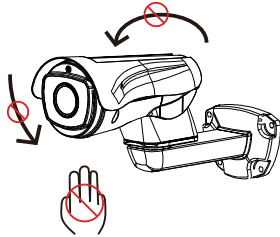
1. Installation Notice



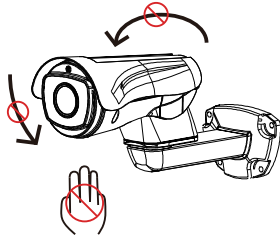
1. With DC12V power supply, the extended distance of power cable can not exceed than 5M, otherwise, the dome may suffer insufficient power, poor infrared effect and continuous reboot etc.




2. Don't pick up the cable by hand, it may cause connection problem with cable.



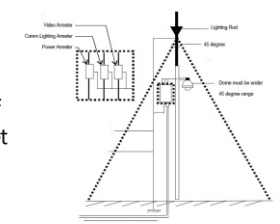
3. For safety and correct installation, please refer to Fig 1 and Fig 2.



4. To make sure the product work properly, don't rotate pan and tilt parts by force, to avoid rotating parts displaced or motor damaged.



5. During the installation, please make sure the products is installed properly with waterproof protection on the bracket and cable.



6. Please ensure lightning protection based on industrial standard to avoid any damaged on the products

2. Installation Guide

The whole system of HD-IP cameras as shown in Fig 2.0, default IP address is 192.168.1.110, System default subnet mask is 255.255.255.0, User name is admin(No password). To ensure correct IP address, user can use searching tool IPWizardIII or install CMS Client(Device Manager> Add Device)



Fig 2.0

2.2 Install ActiveX Controls

- After all devices connection and network setting done, user can browse the video through PC browser by enter device IP address, while ActiveX is required to install for first visiting. If the PC has installed same version control, directly enter the login interface. Install steps as follow.
- a. Input IPC's address, after that you will get the prompt inquiry to install ActiveX controls.
 - b. Please click "loading procedure" to process.
 - c. Different browser version has different interface, please click "Run" to go ahead.
 - d. Please follow hints and close all running browsers during installation, otherwise, the control is not available.
 - e. Restart browser after the control is installed to run, then input IPC's address to login interface.

2.3 Browser

After login, you will enter the following interface shown in Fig 2.1.



Fig 2.1

2.3.1 Modify IP Address

- a. Modified by browser
Enter browser click "Setting—Network—Network", input IP address, then click "Save".
- b. Modified by searching tool
Open "IPWizardIII" as shown in Fig 2.2, firstly search Device IP address, select the one need to be modified, click "Modify network", modify completed.

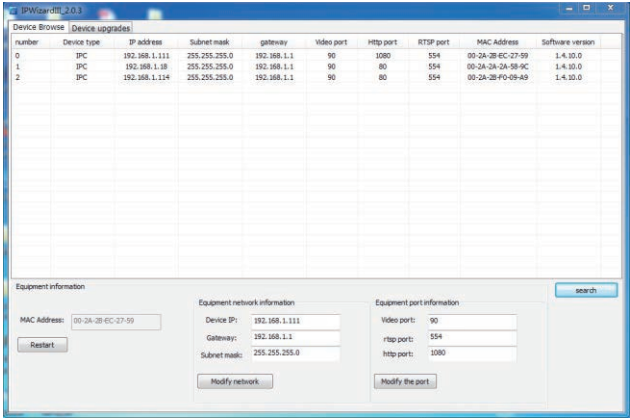


Fig 2.2

2.4 Shortcut Commands

Below is list of shortcut commands, user can enable the function by shortcut command easily on NVR or PC Client.

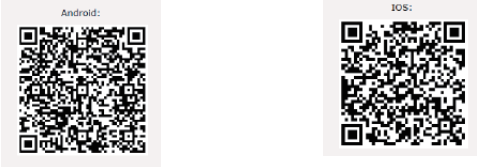
| Call Prese | Function | Call Preset | Function |
|------------|---------------------|-------------|--------------|
| 33 | Pan 180° | 88 | Freeze on |
| 34 | Reset | 89 | Freeze off |
| 35 | Wiper on | 92 | A-B scan |
| 36 | Wiper off | 94 | OSD off |
| 81 | Auto day/night | 95 | OSD on |
| 82 | Switch to night | 96 | Guard tour 3 |
| 83 | Switch to day | 97 | Guard tour 2 |
| 84 | Force on far light | 98(38) | Guard tour 1 |
| 85 | Force on near light | 99(39) | Pan scan |
| 87 | BLC on | | |

Remark: 1.A-B scan default "A" as preset "1", "B" as preset "2", call preset "92" to fulfil A-B scan.
2.PTZ bullet and dome can not support "Pan scan" command.
3.Preset 94 and 95 is only available for the camera with OSD.

2.5 P2P Software

2.5.1 Install APP

- 1. Android user download "Hisee" on google play or android market.
 - 2. Iphone user download "Hisee" on APP store.
- Or scan below QR code to download and install.



2.5.2 Account Registration

It needs to register an account for first using the software. The register steps is below.

- 1. Click "free registration", enter register menu.
- 2. Input the mail then click "get code", check and input the code.
- 3. Input password and confirm password.
- 4. Click" Register" to complete registration, click"OK" to input account and password to login. Shown in Fig 2.3.

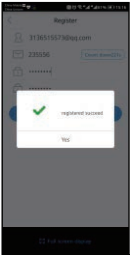


Fig 2.3

2.5.3 Add Camera

Click "Add Device" in the program main interface will pop up the "Add Device" box, shown in Fig 2.4, then choose "wired device—Scan QR", shown in Fig 2.5, align device QR code within frame to add device. After that input Device Name, Device ID, Device Account and password accordingly.



Fig 2.4



Fig 2.5

Description of input item:

| Input item | description |
|----------------|--|
| Device name | Customer customize, attention the name can't be same with added one |
| Device ID | GID of device, (if you use scan QR code/Intranet Search way add device It will be filled in automatically, Be careful not to add the same name already exist |
| Device account | User's name of device login, the default is admin |
| password | Password of the device |

2.5.4 Video View

Click on the online device in device list, you can watch the real-time video window, and control or configure the device. The green icon "🟢" above the channel indicates that the device is online, "🔴" indicates that the device is offline.



Fig 2.6

2.5.5 Panel Button Function Description

① Gesture



Pan&Tilt Control

Enlarge Image(No Zoom)

②Panel Button Function Description

| Button | Description |
|--------|---------------------------------|
| | Multi-screen display |
| | Snapshot |
| | Record off /on |
| | Audio on/off |
| | Intercom off /on |
| | + : Zoom in - : Zoom out |
| | + : Focus near - : Focus far |
| | SD video or HD video |
| | Full screen |

3. Trouble shooting

| Issue | Possible Reason | Solution |
|---|--|--|
| Remote access is not available | 1.Camera fails to connect with Extra-net. 2.Camera and Switch not in same segment. | 1.Check the network, ensure camera connect well with Extra-net. 2. Set the camera and switch in same segment. |
| Night vision is not good, camera restart constantly | Power cable is extended or power supply is damaged cause low voltage. | 1.The extension should be within 5M, or change a new power supply. |
| Unable to control the camera | 1.Lower power, and camera restart constantly. 2.Wrong communication settings. | 1.Change the power supply. 2. Reset communication to PELCOD, 9600, Address 1. |
| Unable to run tour | 1.NVR can't support preset commands over 64 digit. 2.NVR is unable to call the preset before setting it up. | 1.Refer to 2.4 shortcut commands list, start with 3X to replace. 2.Set up preset point first then call it. |
| No image after connecting with NVR | NVR or Client can't support H.265 decoding. | 1.Change a NVR which supports H.265 or change camera to H.264. |