



Instructions for HD WIFI Camera

Thanks for your purchase. This product has the following features, such as short/long distance HD real-time monitoring, TF card HD video recording, cyclic video recording, motion detection alert, TF card playback, Video recording, and Recording synchronization.

Client Download

1. Enter the website, www.scc21.net and go to the download page
2. If you are using Android mobile phones, you can search for "SIPC" and download it in "google play". 
3. If you are using iPhones, you can search for "SIPC" and download it in "App Store". 
4. You can also download Mobile terminal software by scanning the following QR code.



Functions of the keys

1. ON/OFF is the switch key. Pressing ON, you can turn on the machine. Pressing OFF, you can turn off the machine.
2. MODE key: Save/Pause the video recording (Only applicable when a TF card is inserted). Save it before you pull out your card, or you might lose your file.

Infrared night vision On/Off function: When you watching real-time screen, you can turn on or turn off the infrared night vision function by swiping on your screen (N/A for models without night vision function).

USB stick function: 20s after connecting the camera to your computer with a USB data cable, the camera can be used as a USB stick; you can copy, paste, and delete files, and format the stick (only applicable when a TF card is inserted).

Video recording function: The camera will record the video automatically without any other operation after being turned on as long as there is a TF card inserted. Before pulling out the card, please save the video by pressing Save key. (Before inserting the TF card, please format the card).

Status of camera LEDs:

Alternately blinking of two lights - search the network

Consistent red light - short-distance state

Consistent blue light - long-distance state

After you turn on the machine, the two light will be on. Then the two lights will blink alternately. After the blinking, the consistent red light indicates AP is at a short-distance state. After you set up the long-distance state, the blue light will be on consistently.

Restore factory setting function: (select 1 in 2)

1. After you connect your mobile phone to the WIFI hot spot of your camera, you can select Configure>>Camera Info>>Restore Factory Settings in the SIPC software.
2. At the state of consistent red light or blue light after turning on the machine, release the key when the red light blinks fast after pressing MODE key 5S. It is ready when the red light is on consistently.

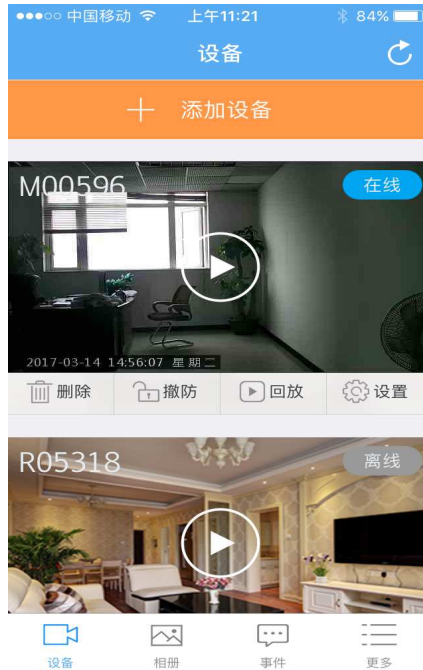
Methods of short and long distance operation

1. Use of short distance

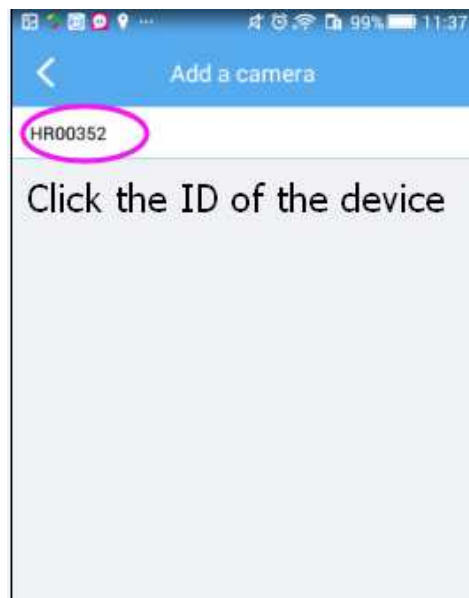
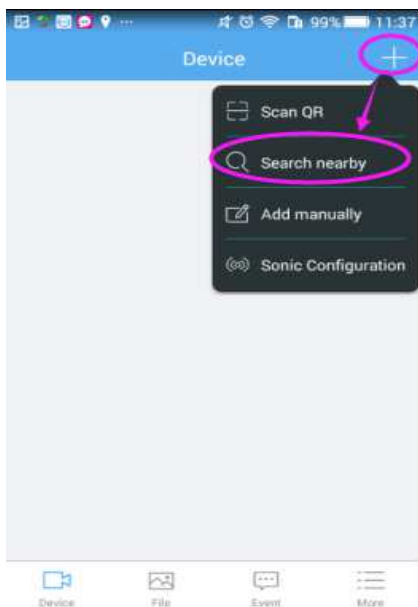
After you finish the registration, turn on your camera. After 30S, you can search for and connect to the WIFI hot spot of your camera with your mobile phones (The name of the WI-FI hot spot of the camera is the same as the ID of the camera)

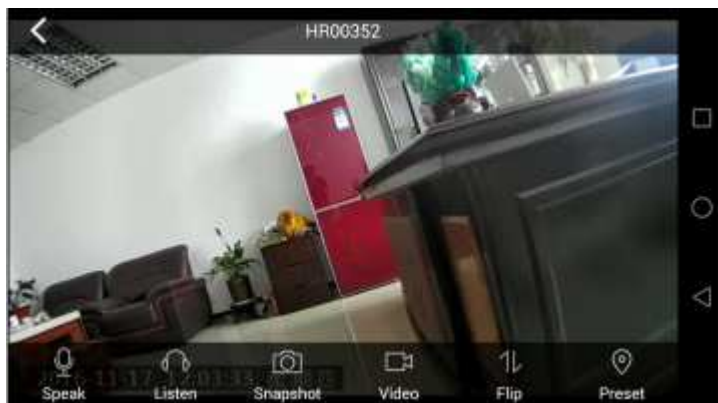
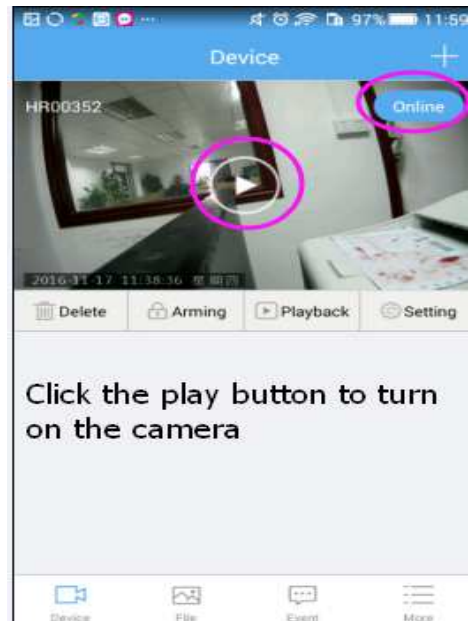
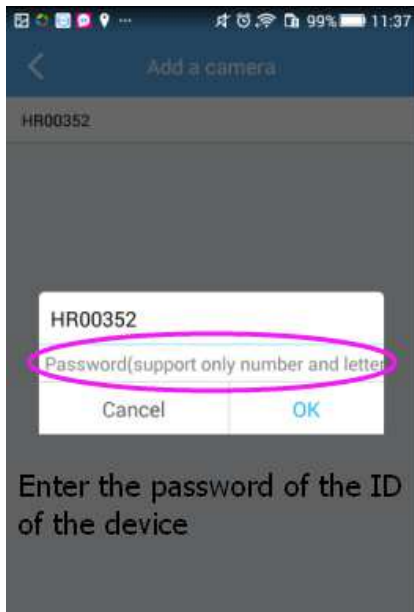


the WI-FI hot spot of the camera, run the SIPC software already installed on your machine.



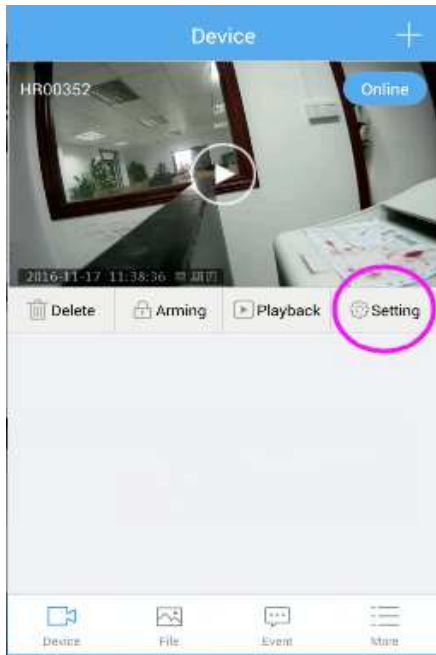
Click the “+” symbol on the top right corner, in the drop-down list, select search for neighboring devices (it is necessary to connect to WIFI hot spot of the device first)>>>Click the ID of the searched device>>>Enter the password of the device>>>Click OK>>>Click the play button>>>You can watch the short-distance real-time screen of the machine.



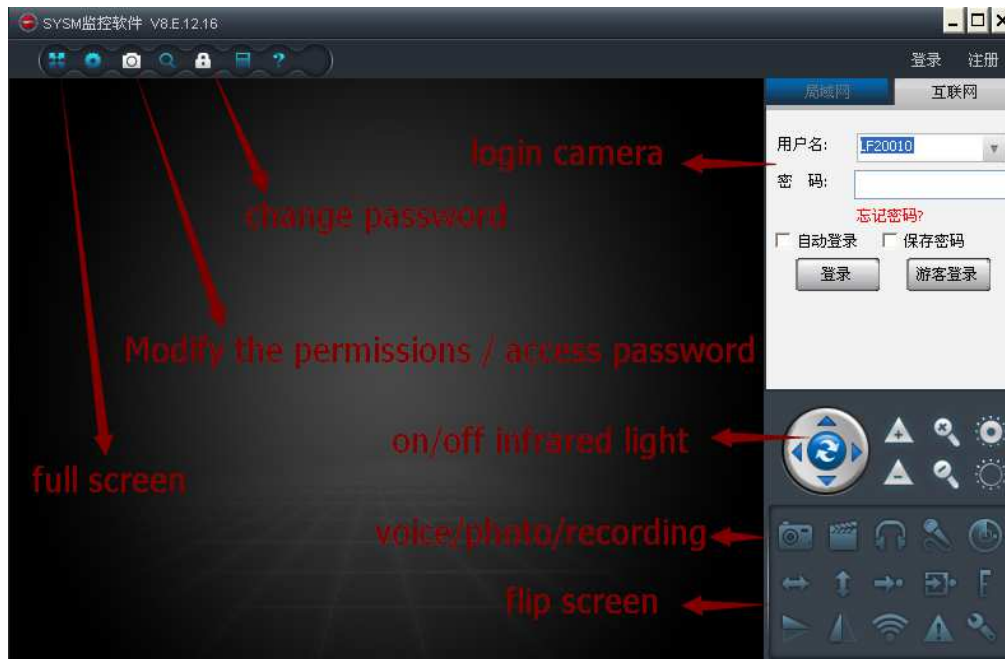


Setting methods of long distance WIFI:

At the state of short distance>>>Click the setting>>>WIFI setting>>>Turn on WIFI>>>Select the name of the router>>>Enter the password of the router>>>Click OK>>>After waiting for 40S, the camera will switch to the state of long distance (the blue light is on). The mobile phone will connect back to the WIFI of the router. When you go into the SIPC again and it shows the machine is online, you can watch the long distance video after clicking the play button.



PC software (download at www.scc21.net)



Parameters of products:

Video resolution	1920*1080
Video encoding	H.264
Video frame rate	25 frames per second
Video format	MP4
Storage	Support TF card, extended to the maximum of 64G
Supported system	Windows IOS Android
Charging voltage	DC-5V/1A
Type of battery	Polymer lithium battery

Frequently Asked Questions:

Failure	Actions
Unable to boot	The battery has no electricity. It will boot normally after being charged
The camera can not open the video online	Check if the network works/Reboot the router or reboot the device
Unable to connect to the device/The remote device is offline	Be careful if the password is correct or if there is any special character when setting up the WIFI
After connecting to the WIFI name of the hot spot of the device, the device can not be found in the APP	Click the refresh icon of the top right corner of the list of the cameras and refresh it, or quit the APP and rerun the APP.

Notes:

- A) Environment of use: Please abide by the relevant national laws and regulations strictly, and do not use this product for illegal purpose, or you should take the consequence

yourself.

- B) About the battery: If you do not use the device for a long time, please charge it fully before you use it. You should charge it at least once every month.
- C) Working temperature: 0—45 degrees Celsius, preferably at room temperature
- D) Working humidity: 20%—80%, please do not put this product under damp working environment for it does not have the function of waterproof.
- E) Other issues: This product is a precise electronic product. Please do not make it under strong strike, vibration, and do not use it in strong magnetic fields and strong electric fields.
- F) Additional information: Please operate the device after reading the instructions carefully in detail, so as not to make mistakes. Any other unknown issue, please contact your local dealer.