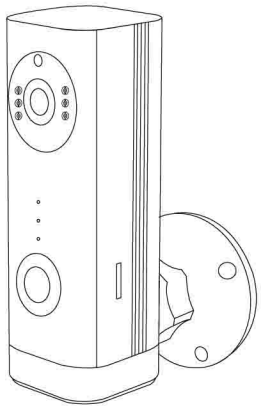
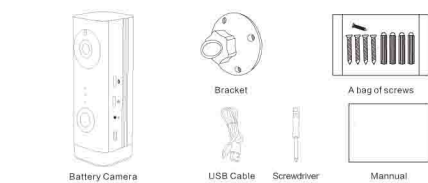


100% wiring-free battery camera

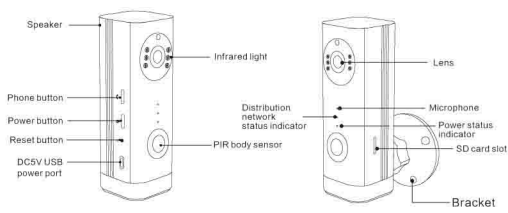


1. Packing list



Battery Camera *1, Bracket *1, A bag of screws *1, USB Cable *1, Screwdriver *1; Manual *1

2. Product Details



Serial	Button	Operation
1	Power button	Long press for 5 seconds, power on/off
2	Phone button	When the camera is in the sleep state, press the button for 1 second to manually wake up the device.
3	Phone button	When the camera is in the awake state, press 1 second to make a phone call, and you can call the associated APP account.
4	Reset	Press RESET button 3-5 continuously, it will return to AP hot spot direct connection mode.
5	Reset	Press and hold the RESET button for 5-8 seconds, until you hear "Restore factory settings"

1

3. How to Download and install APP

3.1 Download APP: IC See

Method 1:

A. Open your mobile app (e.g. WeChat/QQ/Facebook)

B. Scan the following QR code "IC See", then enter the mobile store to download.

Method 2:

Search "IC See" in the mobile APP store directly and download it.



"IC See" download QR code: Universal for Android/iOS

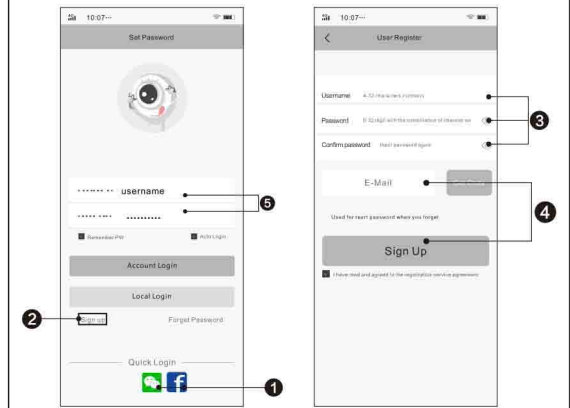


Scan the QR code, showing this page, click the top right to select "Open in the browser", will appear the download page

2

3.2 User registration & login

- If you have a WeChat or Facebook ID, you can use the "Quick Login" on the APP interface directly.
- You can also create a new username and log in: Click "Sign Up" to get a new account & password.
- Enter a new username and password;
- Use the email account as the account to verify the account details via email to complete the registration;
- Then log in using the username and password you just registered.



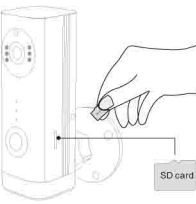
3

4. Add camera to app

4.1 Insert SD card

Insert SD card, used to store and play back video recording video files (device accessories do not contain TF card, TF card supports up to 128GB)

Note: Please insert the SD card when the device is turned off or not powered, otherwise the mobile phone APP will not recognize the TF card.



Please make sure to place the memory card in the direction of the figure.
Use standard notes: Cards 10 reading and writing speed 8-128GB, 128GB must use a low speed card.
Note for use of 128G memory card: support SD3.0 low speed (SD3.01 high speed is not available)

4.2 About power on or boot

Press and hold the power button for 5 seconds, wait until the blue indicator light stays on, and hear "Start Quick Configuration" to start matching the device!
If the camera is out of power, please charge it with DC5V1A or 2A USB power for 15 minutes, then turn it on again.

4.3 Device Networking Operation

4.3.1 Mobile Internet
Place the camera and mobile phone within 30-100 cm to the router and connect WiFi.



Note: This product does not include DC5 charging head; battery camera can only use 2.4G Wi-Fi, does not support 5G Wi-Fi

4

4.3.2 Open the app, log in, and click "Add my device (recommended)"

(Note: 1. If you don't see "blue light is always on", please press "telephone button" to wake up, or check if it is turned on.
2. If you do not hear the "wait to be configured" sound, please reset the camera and reconnect)

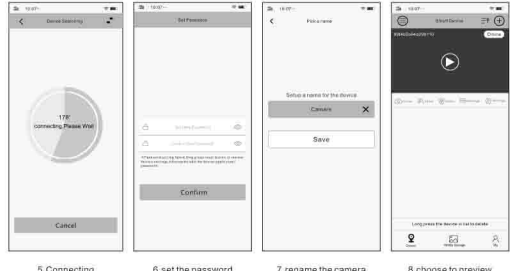
4.3.4 Select the 2.4G network and enter the WiFi password, click "OK" (voice prompt: "Please enter the wireless router password, click OK")

4.3.5 Listen to the voice indication "Connecting, please wait", "Connect the router successfully" and "Please set the password"

4.3.6 After renaming the camera, enter the device list screen and select the added camera to preview the screen.



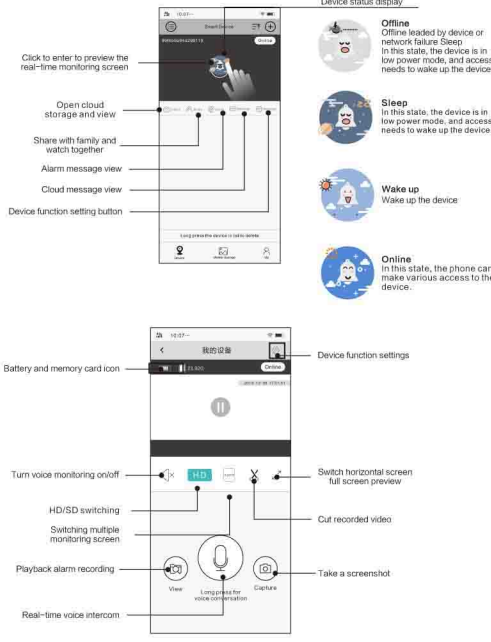
1. Click the "Add" button 2. choose the way to add 3. After listening to the voice prompt, click "Next" 4. select the network, enter the router password



5. Connecting 6. set the password 7. rename the camera 8. choose to preview

5

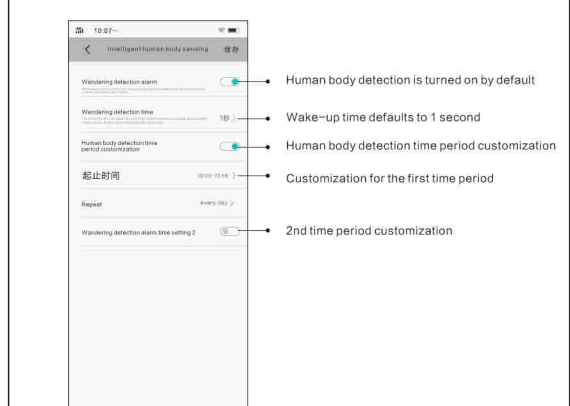
5. Interface function introduction



6

6. Human body detection alarm related settings

6.1 Intelligent human body sensing



- Human body detection is turned on by default
- Wake-up time defaults to 1 second
- Human body detection time period customization
- Customization for the first time period
- 2nd time period customization

Note:
1. Human body detection is enabled by default.
2. Wake-up time defaults to 1 second
3. Human body detection alarm time period can be defined

7

6.2 Alarm Message Viewing and Playing Back Video

6.2.1 Alarm message settings



- Alarm push message Default: On
 - Open, you can achieve WeChat alarm push
- Note: WeChat alarm push steps:
1. Bind WeChat account login
2. Pay attention to the "super look" WeChat public number
3. Open WeChat Internet

6.2.2 Alarm message checking

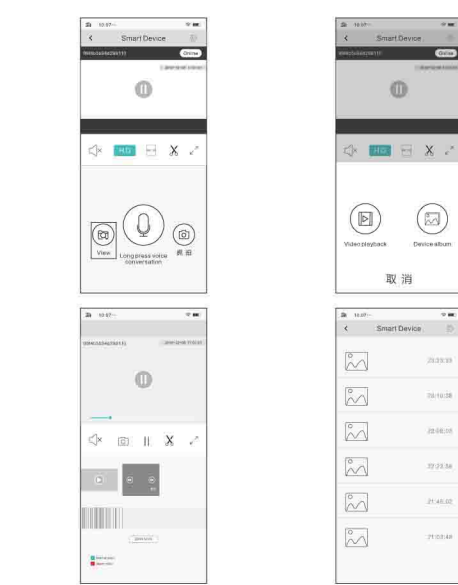


Message red dot: indicates that an event with an alarm has occurred
Wandering detection: Click "View picture" to view the alarm screenshot
Wandering detection: Click "View picture" to view the alarm screenshot

Note: The screenshot of the alarm push, the image server only has 60, and the share account can also be viewed; After more than 60 sheets, delete the oldest one and save the latest one. Every time the human body detects the alarm Occurs, captures 3 pictures, the first picture is used as an alarm push screenshot, the second and third pictures are saved to the SD card Backup

8

6.2.3 Alarm video playback and alarm screenshot



Note: Alarm recording and alarm screenshots will only be saved after the TF Card is inserted.

Video playback:
Normal recording: The camera wakes up and the card starts recording.
Alarm recording: Alarm recording of human body detection. Alarm recording will only be recorded when human motion detection occurs while the camera is sleeping.

9

7. Important function description

7.1 Human body detection alarm action

When the human body detection alarm is triggered, the mobile phone APP will have the following alarm response:
7.1.1 Mobile APP alarm sound: (After the notification of IC See is turned on in the setting of the mobile phone, the volume of the mobile phone is turned on)
7.1.2 Mobile Push Message (IC See APP Notification Open in Mobile Phone Settings) / WeChat Push (WeChat Connect)
7.1.3 APP alarm screenshot capture 3: (1st alarm push screenshot to store image server, 2-3 save SD card backup)
7.1.4 APP alarm recording: (you need to insert SD card to store video)

7.2 AP mode networking, can achieve network disconnection video recording

7.2.1 Press RESTER button 3-5 continuously, you will hear the prompt "Enter direct connection mode"
Click+ and select "AP hotspot stand-alone direct connection", listen to the prompt "Please select device hotspot" and select hotspot.
The hotspot name format is: camera_XXXX, which can be added successfully.

Note: 1. Android phone, no need to enter hotspot password, Apple mobile phone default hotspot password is: 1234567890
2. Android phone hotspot direct selection, Apple phone needs to go to "Settings" - "WiFi list" to choose.
3. If you have changed the device before setting the access password, please enter the access password.
7.2.2 In AP mode, the card can be recorded, and the "off network recording" function can be realized.
7.2.3 If the camera is connected to the camera in AP mode, the camera will remain awake and will not sleep.

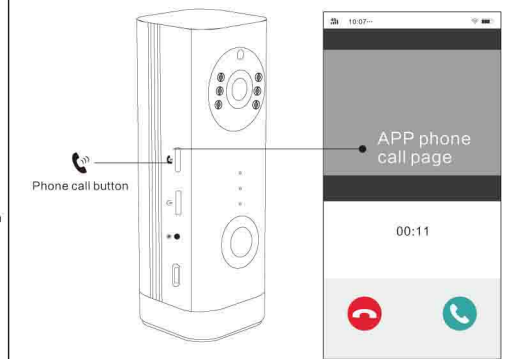
7.3 Camera Phone Button Call

7.3.1 If the app is running, the phone call screen will pop up as shown below:
7.3.2 If the app is not open or running in the background, press "Phone button", the APP will push the text "Caller"

Note: As long as the human body is detected, the alarm video will continue

Device Album: Screenshot of the alarm used to view the backup
After the human body is detected, the device will capture 3 pictures, the first picture will be used as the alarm to push the screenshot, and the second and third pictures will be saved in the SD card backup.

10



7.4 About sleep, wake state

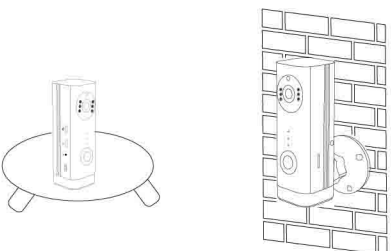
- 7.4.1 Press the RESTER button, the camera will sleep, press the "telephone button" to wake up
- 7.4.2 If the camera is charging, it will remain awake and will not sleep. If the card is inserted, Will always record, that is, ordinary type of video
- 7.4.3 When AP mode is connected, it will not sleep and will remain awake.

11

8. Camera installation

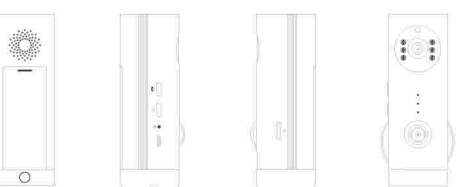
8.1 Installed on the desktop

It can be conveniently placed in any flat position.



8.2 Mounting on the wall

- Prepare an extra separate cross-shaped screwdriver, which is included in the accessories we provide.
- Use a screwdriver to thread the screw through the 90-degree groove of the iron ball bracket.
- Screw the screw into the hole in the rear of the camera. The 90 degree slot adjusts the camera's monitoring angle.
- Dip a screw into the wall and hang it on the wall through the threaded hole on the back of the ball bracket.



12

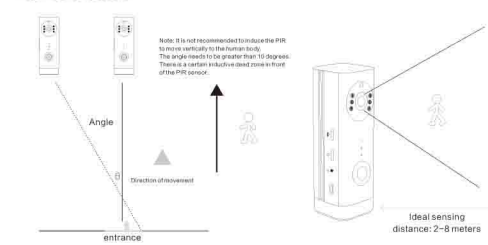
9. Important Tips: Ways to reduce PIR body detection error alarm

9.1 To reduce PIR body detection false positives, please note:

Do not install the camera in bright light, including sunlight, bright lights, etc. Do not place the camera where it is moving too frequently. According to numerous tests, the inspection distance between the camera and the vehicle is 15 meters. Keep away from the air outlet, including air conditioning vents, humidifier air outlets, camera thermal vents, etc. Do not mount the camera on the mirror. Keep your camera at least 1 meter away from any wireless device, including Wi-Fi routers and phones. To avoid wireless interference.

9.2 PIR human detection coverage monitoring area

When installing the camera, it is not recommended that the PIR sensor face the monitoring point vertically, such as entrances and exits, doors and windows or warehouse gates (Note: the vertical front of the PIR is the induction blind zone), otherwise the movement time may not be detected.



Status indicator description:		
No.	Indicator status	Camera status
1	Blue light is always on	Waiting for Wi-Fi connection
2	Blue light flashes slowly	Network configuration is successful or someone is visiting to watch the camera
3	Charging light red light flashing slowly	Charging light: Charging

13

FAQ:

Q: How to restore the factory settings?

A: Press and hold the RESET button on the side of the device for 5-10 seconds, and release it when you hear "restore factory Settings".

Q: why can't I connect to the device?

- A: please check the following conditions before connecting to the network:
- If the wifi is 5G frequency band, please switch to 2.4g frequency band. 5G frequency band and dual frequency band are not okay.
 - When matching for the first time, keep the distance between the camera, router and mobile phone within 1-2 meters. (If the router ages, the signal range will decrease, so please be close to the router)
 - Whether the Wifi name is hidden, please make sure the router has no blacklist;
 - The router is not bound to a MAC address. (A stranger can access the Internet by connecting to your wifi, which means there is no bound MAC address.)
 - Try to avoid using a secondary router, and the instability of the wireless bridge router will cause the networking to fail;
 - WiFi uses a WiFi transmitter (such as 360WiFi, TP transmitter, etc.). If you connect this transmitter to your computer to transmit signals, it will be very unstable

Q: how to store video?

- A: 1. Use an external TF card, support up to 8-128GB memory card, automatically cycle after storage. Overwrite the oldest video content;
2. Charge cloud storage, free experience 30 days alarm picture video storage service, such as after 30 days
Continue to use the renewal fee, open the APP cloud storage center to view the charging standard;

Q: how to deal with the memory card is not recognized?

A: Power off the camera and restart or insert the card into the computer to read and format it before installing it back to the camera;
Note:
1. The memory card cannot be assembled or disassembled while the device is powered on. If the memory card is not inserted when the camera is powered on, the device cannot recognize the memory card. Please insert the memory card after the device is powered off.
2. To ensure the quality of the memory card is good, it is recommended to use the "Kingston" "Sandisk" "Toshiba" original brand C10 read and write speed memory card, do not use fake upgrade memory card and neutral card;

14

Q: how to deal with it when the device is abnormally offline?

- A: 1. Check if the equipment power, plug, cable and socket are okay;
2. Check if the network is normal;
3. Keep the distance between the router and the device within 10 meters;
4. Have you changed the router password or replaced the router;
5. If the above situation is ok, please restore the factory settings and reconfigure the device

Q: how to switch networks?

- A: 1. Open the Settings Center - Network Configuration - select the new WiFi and enter the password to configure;
2. Restore the factory, delete the devices list, and reconfigure in the new network;

Q: Why does the RESET button not respond when the device is turned on?

A: When pressing the RESET button, please keep the device powered on, and then press and hold the RESET button for 5-8 seconds.

Note

- Please refer to the actual product, the manual is for reference only;
- APP and device firmware will be updated occasionally. If there is an upgrade later, please upgrade directly online, there will be no other notifications;
- The manual may be technically inaccurate or inconsistent with the function of the product or the wrong place of printing. Please refer to the final explanation of the company;

Special Declaration:

- Please take the real product as the standard. The manual is for reference only.
- APP and device firmware will be updated from time to time. If upgraded, please finish it yourself, there won't be further reminder.
- The manual may contain technical inaccuracies, or inconsistencies with product functions or misprints, and the final interpretation right belongs to the company.

15