

Quick Start Guide



Of 3G/4G HD Network Camera

V 1.1

2016-12-26

Content

1. About camera	3
2. Install the Micro SD card and SIM card	4
3. Connect your camera	5
4. View via mobile phone	6
5. View via PC	7
6. Check the SIM card	9
7. Set Micro SD card records	11
8. More infos	11

1. About camera

1.1 When you receive product, besides camera the product package should contain the following accessories:

- Power adapter*1
- Screws bag*1
- Software disk*1
- User manual*1
- Antenna*1or2



If find any product damaged or parts missing, please contact our sales or reseller in time.

1.2 Interface.



Network cable(LAN) interface is not available for 3G/4G cameras.

2. Install the Micro SD card and SIM card

2.1 Remove the housing cover for camera model one.



1)



2)



3)

2.2 Remove the housing cover for camera model two.



1)



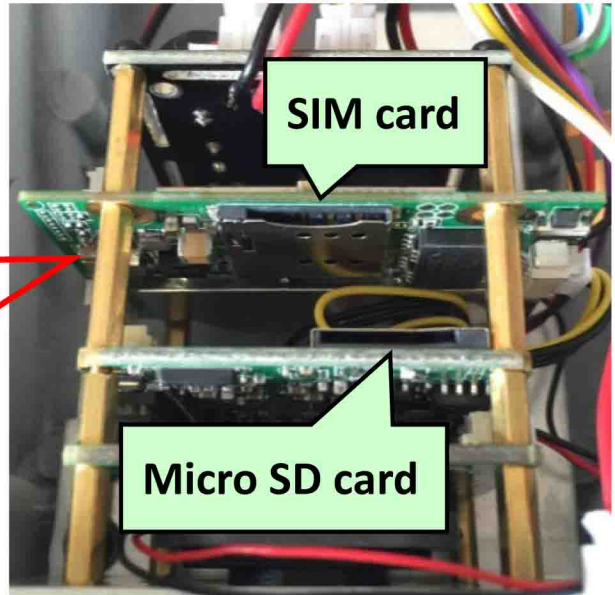
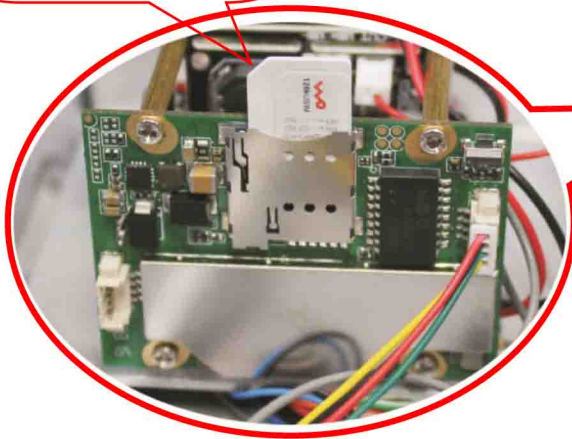
2)



3)

2.3 Insert the Micro SD card and SIM card.

Note the direction of the SIM card!



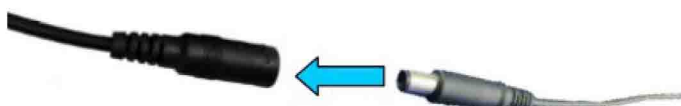
Frequency of the SIM card is supported by your 3G/4G camera!
SIM card size type is Micro Sim (12mmx15mmx0.8mm)!
Please note the direction of SIM card installation!
Hot swapping is not supported!

3. Connect your camera

3.1 Connect power adapter and install the antenna to camera.



1)



2)



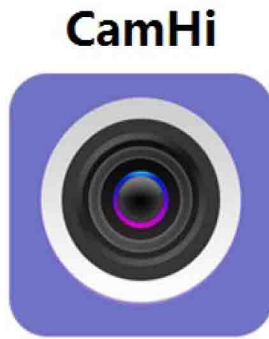
1)

4. View via mobile phone

4.1 Download “CamHi” from Google Play Store/App Store or scan the QR code below to get APP information.

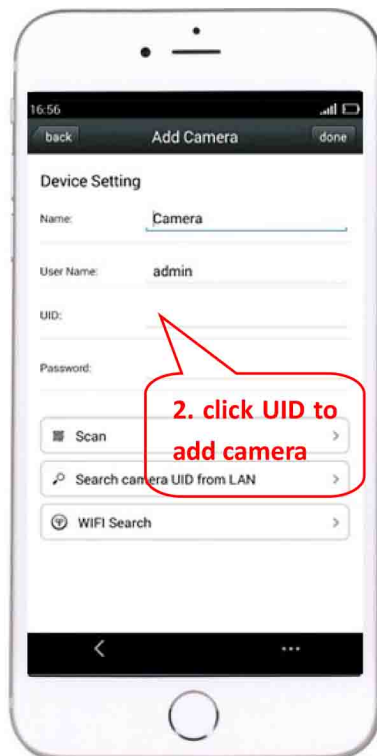
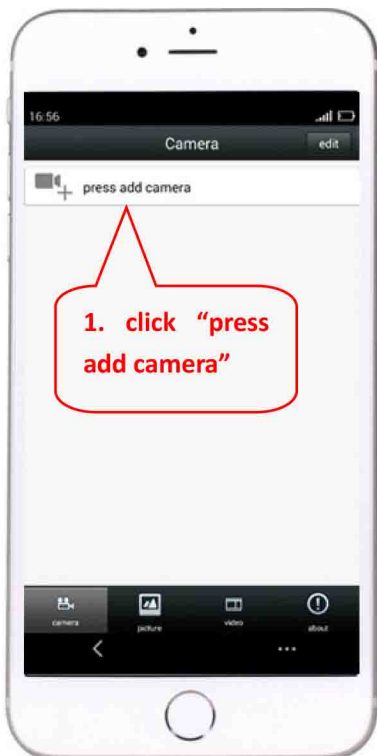


Android



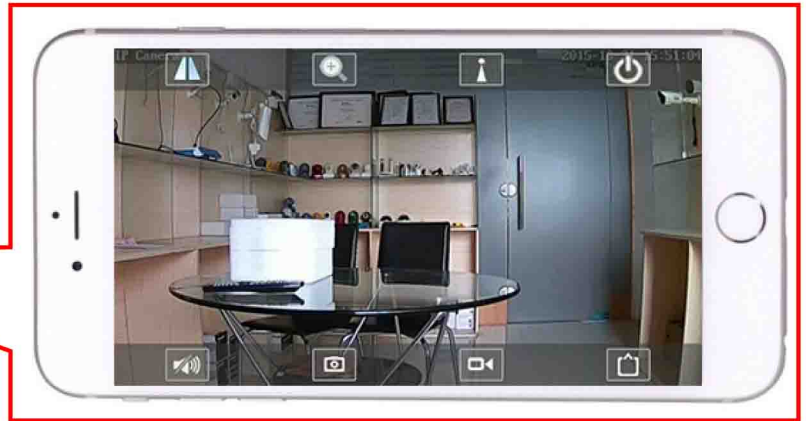
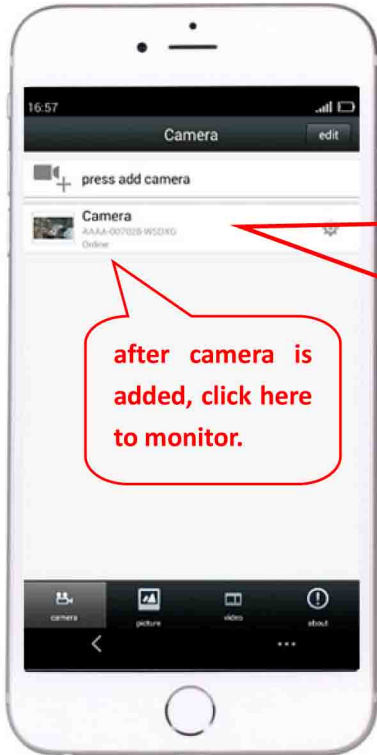
IOS

4.2 Run APP and click “+” to input the camera UID&password to add camera.



You can quick enter UID by scanning QR code.

4.3 Click camera to view real-time image when the added cameras is displayed online.



after camera is added, click here to monitor.

If view the 3G/4G camera is offline, please read this manual “6. Check the SIM card”.

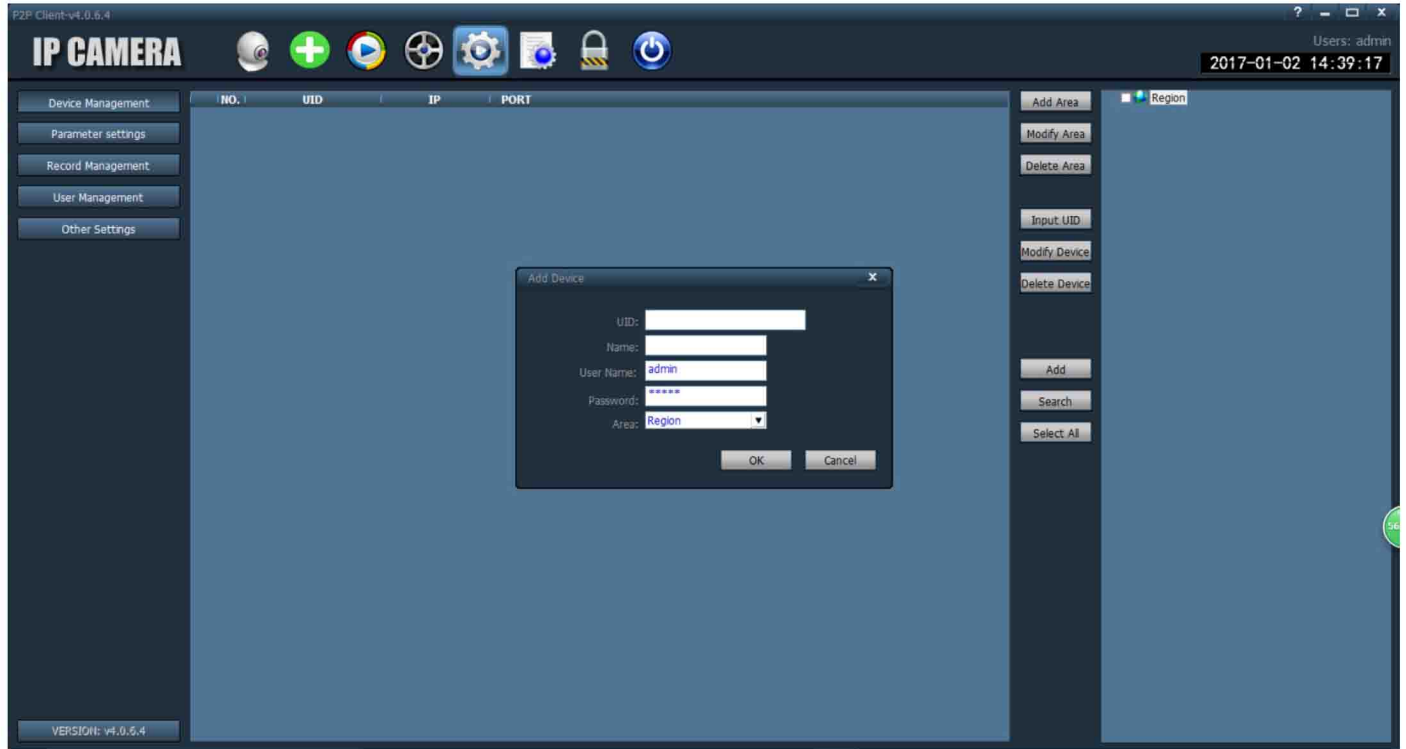
5. View via PC

5.1 Install the “HiP2P Client_Setup” from the CD, then run “HiP2P Client”.

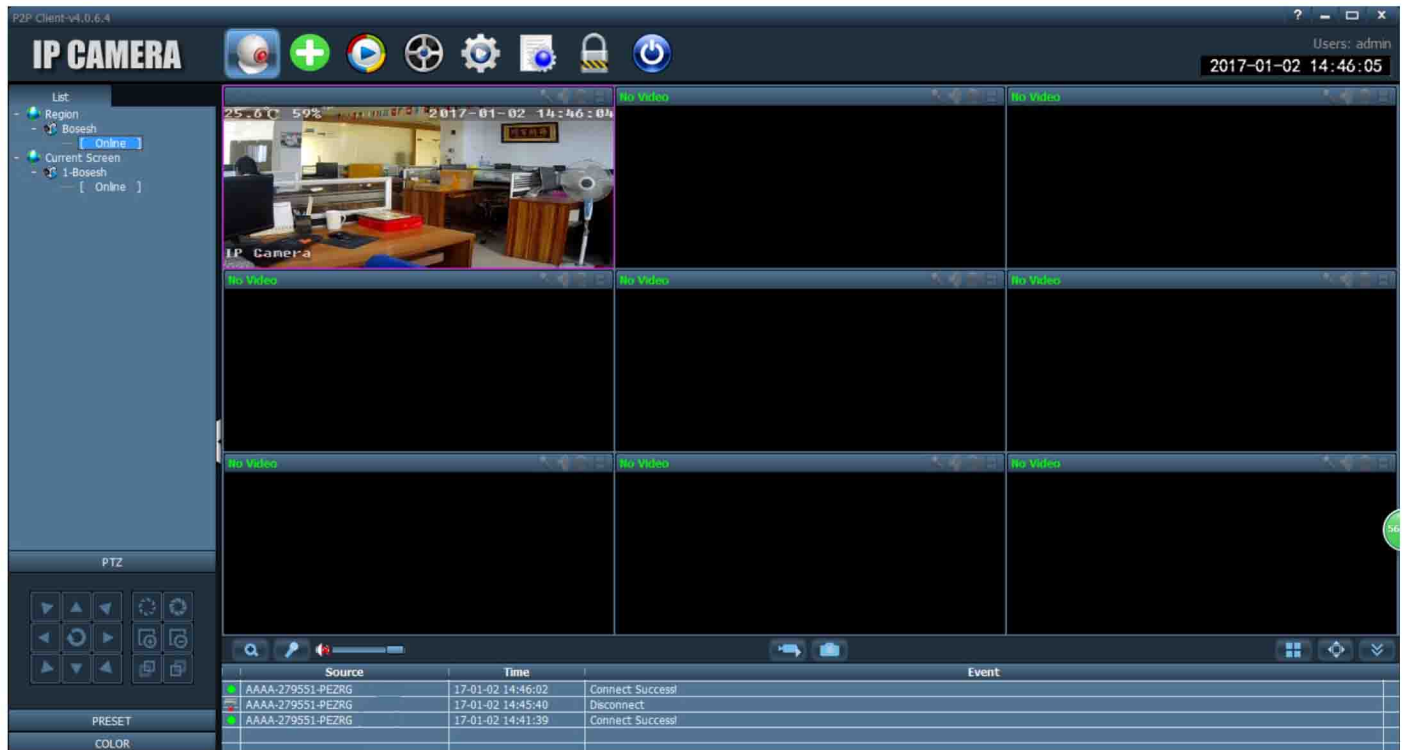


PC client only supports Windows operating system.

5.2 Enter the “Config” interface and click “Input UID” to input the camera UID&password, and then add the camera.



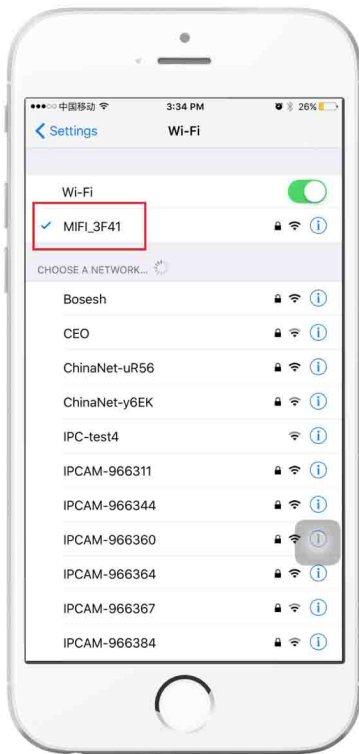
5.3 Click camera to view real-time image when the added cameras is displayed online.



If view the 3G/4G camera is offline, please read this manual “6. Check the SIM card”.

6. Check the SIM card

6.1 Use the mobile phone or PC to connect the WIFI “MIFI_3F41”, the WIFI password is “1234567890”, you can find the WIFI when the camera starts working.

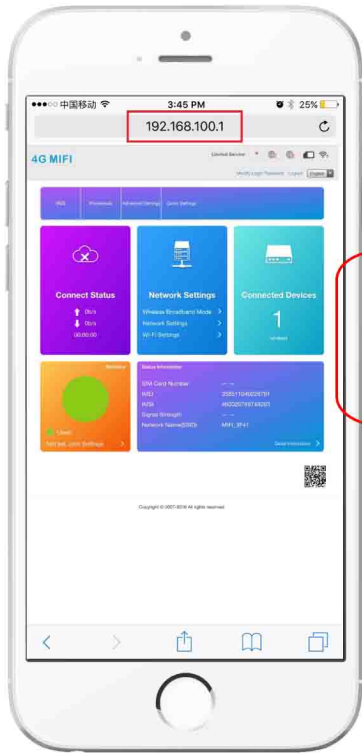


mobile phone

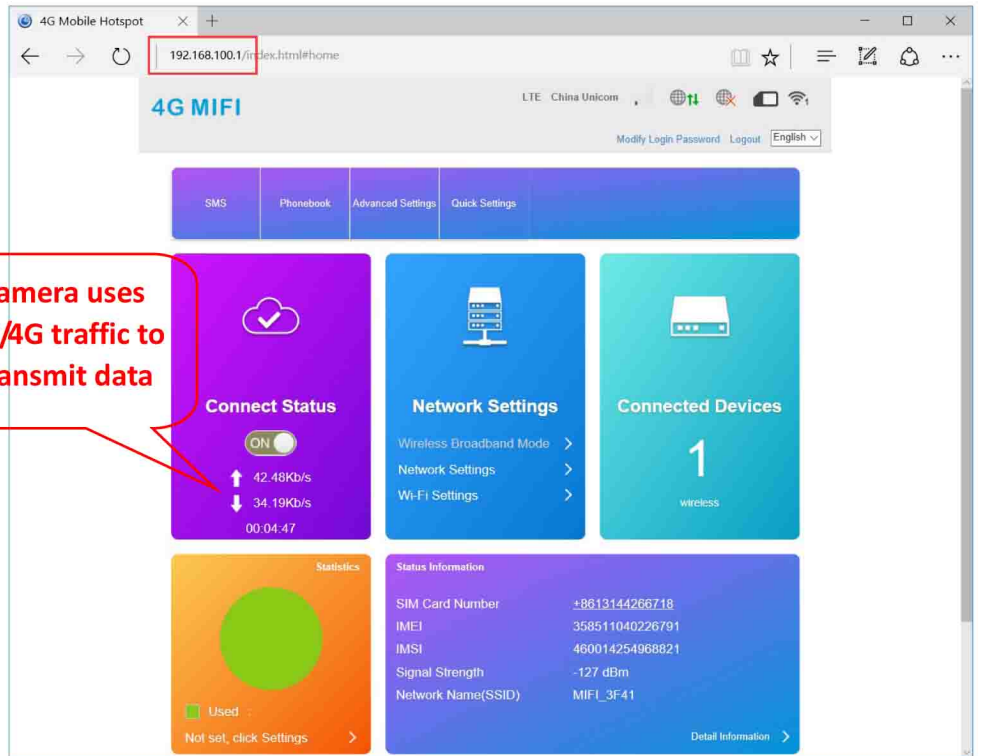


PC

6.2 Access “192.168.100.1” through the browser, the page password is “admin”, you can check the SIM card information on this page.



mobile phone

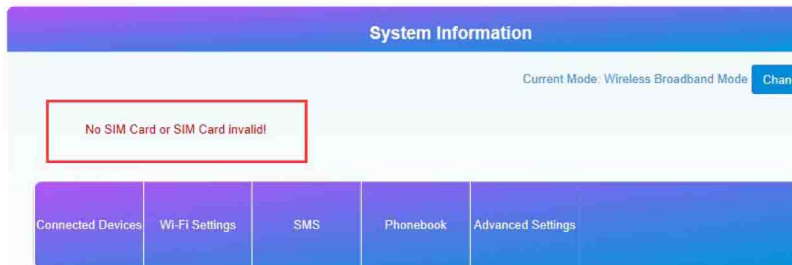


PC

6.2 If your camera display is offline, please note the following:

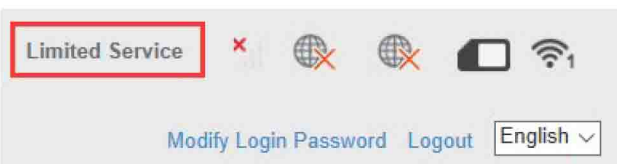
① Damaged card or wrong installation direction when prompted "

No SIM Card or SIM Card invalid!", as shown below:



② Frequency not supported or SIM card arrears when prompted

"No Service" or "Limited Service", as shown below 1):



1)



2)

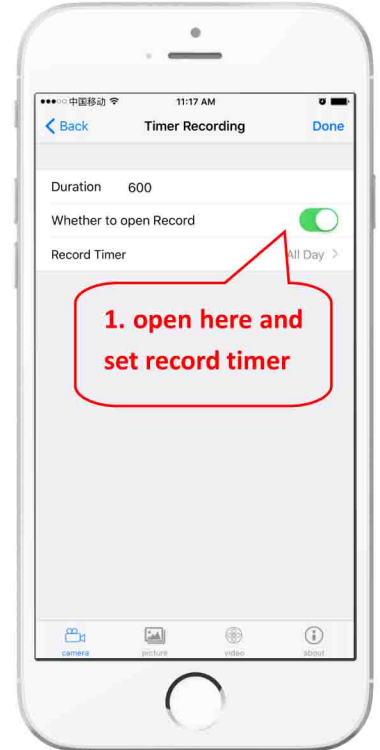
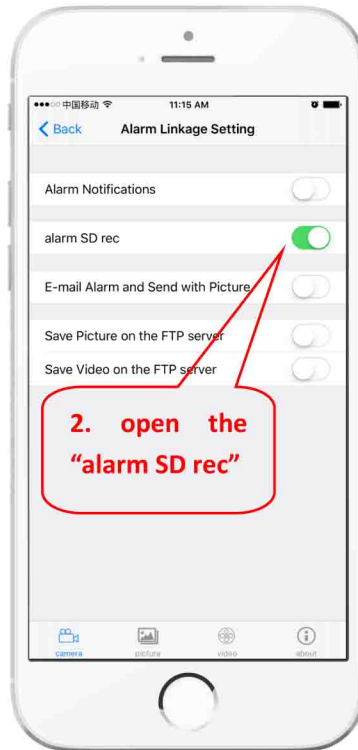
③ Make sure 3G/4G **signal strength** is enough, as shown below 2):

7. Set Micro SD card record

7.1 Set Micro SD card record on phone.



Set alarm record



Set timer record

Also you can set these parameters via PC client

8. More info

This manual only provides basic guidance and simple function in instructions, please refer to the content in CD for more information.

If you need technical support or have any suggestions for improvement of the product, please contact our sales staff or dealers.