

HD-IP Speed Dome Quick User Manual

VC-RT.01

1.WIFI Device Connection

1.1 Download and Install P6Sliite on Mobile Phone

Search P6Sliite in APP Store / Google Play & Android Store, or scan the below QR code.



1.2 WIFI Add New Camera

1.2.1 Account Register And Login In

User can register and login "P6Sliite" by Email.

1.2.2 Add A New Device

To add a WIFI camera, please connect WIFI through device's AP hotspot in the factory default setting.

If the camera has been successfully paired with router before, the camera should be restored to the factory setting via the long press reset button for 5 seconds before adding the device.

1

1.2.3 Android Phone Connection Method:

· Connect the mobile phone with Wi-Fi network of router (Please connect the phone to 2.4G Wi-Fi, the camera doesn't support 5G Wi-Fi)

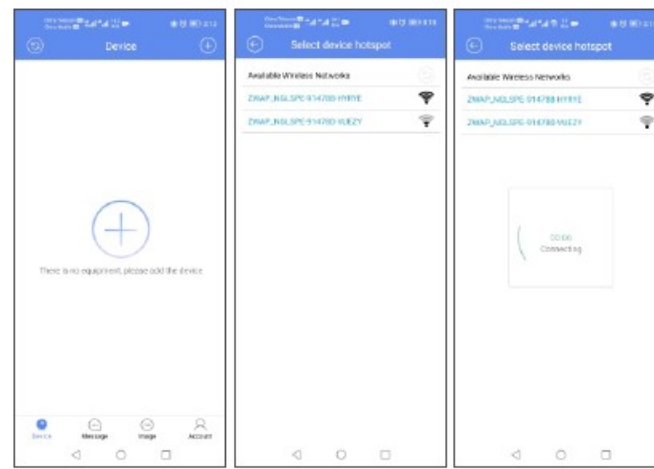
· Login APP "P6Sliite", click the add button "+" upper right corner of the device list --- "Add a Wi-Fi device" --- "Next"

· Select AP set-up network

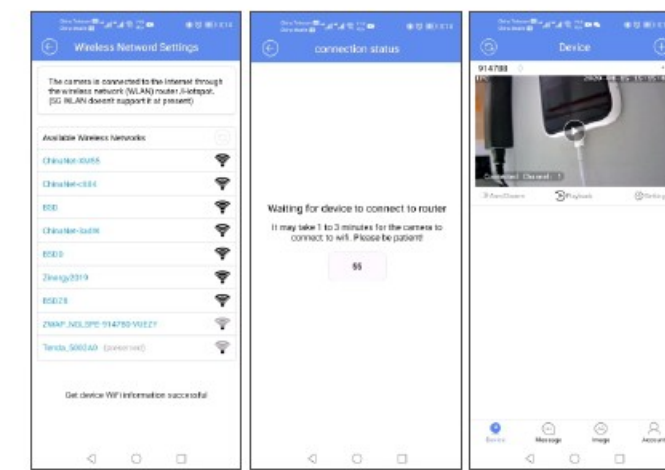
· Select the AP hotspot device starting with "ZWAP_NG****-73****-CE****", it will show the hotspot is connecting(count down 30s) after clicking

· Select Wi-Fi route needed connects with from the list, enter password and confirm

· User can operate it on the device list after hearing "Wi-Fi is connecting, please wait...Network connection is successful"



2



1.2.4 IOS Phone Connection Method:

· Login APP "P6Sliite", click the add button "+" upper right corner of the device list --- "Add a Wi-Fi device" --- "Next"

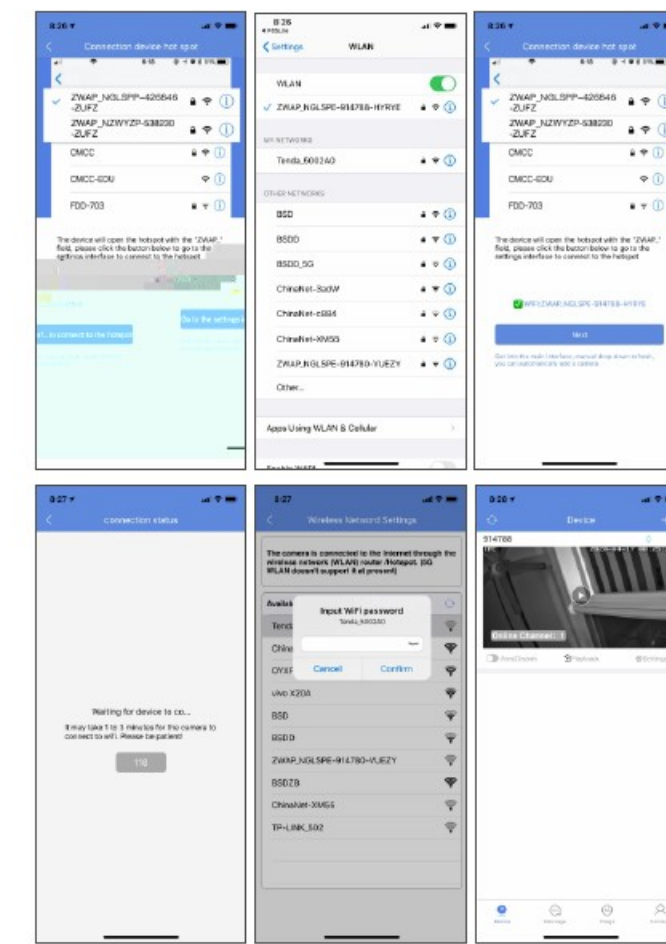
· Select AP set-up network, jump to the Wi-Fi setting page of the phone

· Select the AP hotspot device starting with "ZWAP_NG****-73****-CE****" (enter AP hotspot password: 01234567), and confirming hotspot connected and upper the phone showing "Wi-Fi" icon, please jump back to "P6Sliite" APP --- "Next"

· Select Wi-Fi router needed connects with from the list, enter password and confirm

· User can operate it on the device list after hearing "Wi-Fi is connecting, please wait...Network connection is successful"

3



Note:Device supporting Wi-Fi function depends on product model, please consult sales personnel for details.

4

2. Wired Device Connection

2.1 Device Connection

The whole system of HD-IP AI camera is shown as below, default IP address is 192.168.1.110, system default sub-net mask is 255.255.255.0, user name is admin (No Password).

(For ensuring the correct IP address, user can use searching tool EasyTool or install EasyVMS Client --- Device Manager --- Add Device).



2.2 Install Video Software

After all devices connection and network setting done, user can browse the video through PC browser by access device IP address, while a plug is required to install for first visiting. If the PC has installed same version plug, enter the login interface directly. Please install with following steps.

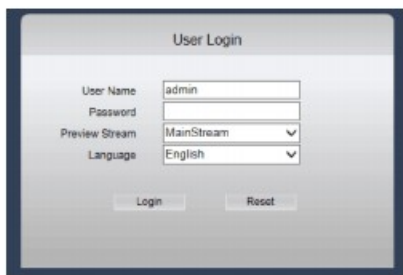
The following page will appear after the first login, please download the plugin. You will get the plugin installation of VideoClientControl.exe



5

Download and run the plugin, click the [OK] button to install the plugin, close the IE and re-open after the installation is completed, and enter the IP address to login.

After the installation is completed, re-open IE and enter the device IP to display the login page. The default username is admin and the password is blank.



2.3 IP Address Modification

2.3.1 Modify IP Address On Browser

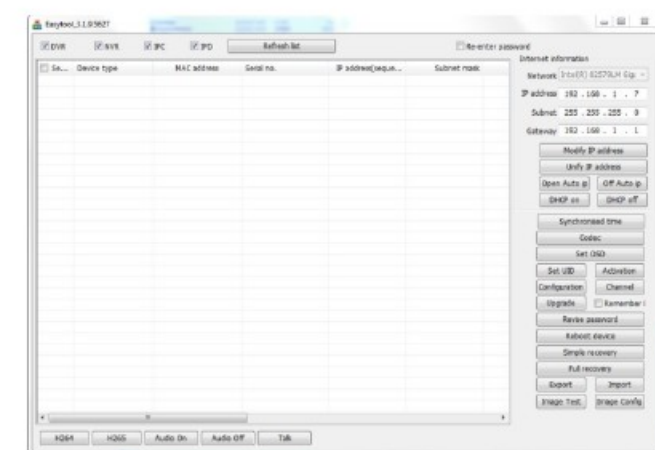
Go to the browser and click "Remote Settings"----"Network Settings"-----"IP Address Bar" to enter the corresponding IP address, and then click Save;

Remark: When manually changing the IP, the IP type needs to be changed to "manual setting"; adaptive IP is changed to "disabled";

2.3.2 Tool To Modify IP Address

Open the "IP" tool is shown as below; first click "Refresh List" to search for the device IP address --- check the IP to be modified --- enter the IP address to be changed in the right area --- Click to modify the device IP address to complete the modification.

6



2.4 APP Connection On Mobile Phone

Login to the browser and enter to --- Remote Settings --- P2P settings. As shown below, to scan the device corresponds UID number and adds the devices.



3. Tour, A-B Scan Operation

Below is the list of shortcut commands, user can enable the function by shortcut command on NVR or PC Client easily.

7

Shortcut Command

CallPreset	Function	CallPreset	Function
34	Reset	94	OSD off
81	Autoday/night	95	OSD on
82	Switchto night	96	Guardtour3
83	Switchto day	97	Guardtour2
84	Forceon farlight	98(38)	Guardtour1
92	A-B scan	99(39)	Pan scan

Note:

A. A-B scan default "A" as preset "1", "B" as preset "2", call preset "92" to fulfil A-B scan.

B. The tour function and range is 0-355 degree just for some of product model, please consult sales person for details.

4. Setting For Humanoid Tracking

4.1. Scene Installation Diagram Equipment installation instructions

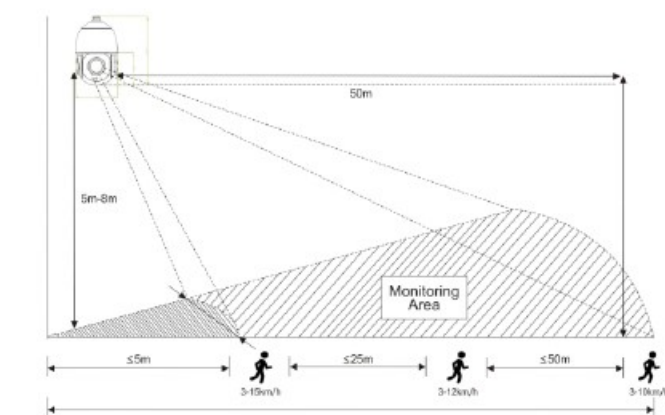
4.1.1 Please refer to the following diagram to adjust the proper installation angle.

4.1.2 3D humanoid auto-tracking camera can realize alarm APP push, Audio alarm output can be customized.

4.1.3 When multiple targets appear at the same time, the system will prioritize tracking relatively large targets.

4.1.4 The 3D humanoid auto-tracking camera is suitable for border defense, reservoirs, forests, farms and other low-density scenes, which can give full play to product advantages. Large amount of people, such as train stations, squares, not suitable for using auto-tracking camera.

8



Note:

A.20X camera, the target $\leq 2m$ or target $\geq 50m$, and the tracking effect be affected.

B.Fixed lens camera, target distance $\geq 15m$, the tracking effect will be affected.

4.2 3D Humanoid Tracking Operation

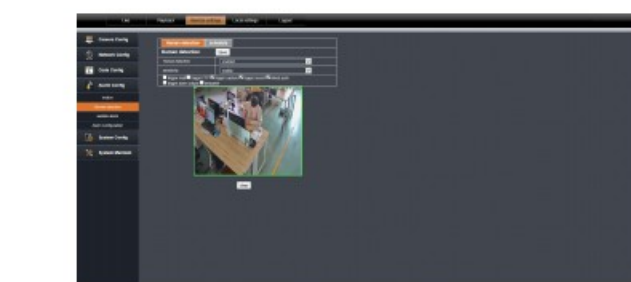
(Note: Some cameras don't support this feature, please consult sales person)

The humanoid tracking is closed as default, but user can open it by following:

4.2.1 Enable Tracking Function By Web Interface

Enter web interface --- Click "Remote Setting" --- "Alarm Config" --- "Human detection" --- enabled and save.

9

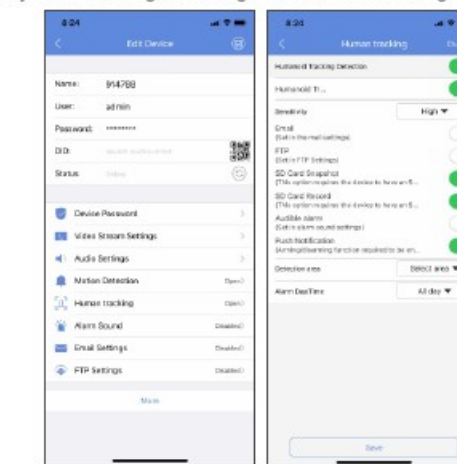


Note: Please wait for 6 seconds that camera will be back to execute the tracking function automatically when user controls PTZ function.

4.2.2 Enable Tracking Function By Mobile APP

Enter "P6Sliite" --- Click "Settings" --- "Human Tracking"--- Enable "Human Detection", "Human Tracking" and save.

Note: In both APP and web interface, cameras will execute tracking when it detects an invasion, and it will be back to work for previous action automatically after the target leaving out of the monitoring area.



9

4.3 IR LED + Warm/White Light LED Work Mode

In night vision, warm/white light LED will turn on when camera detects a moving person, it will turn off automatically after the target leaving. This function only work on enabled the human detection.

5. Trouble Shooting

Issue	Possible Reason	Solution
Unable to turn on warm light LED	1.Monitor distance is too far and human target is smaller 2.Unopened the tracking function	1.Zoom in and adjust the monitoring position 2.Enable the tracking function
Remote access is not available	1.Camera fails to connect with Extra-net. 2.Camera and Switch are not in same segment.	1.Check the network, ensure camera connect well with Extra-net. 2. Set the camera and switch in same segment.
Night vision is not good, camera restart constantly	Power cable is extended or power supply is damaged causing low voltage.	1.The extension should be within 5M, or change a new power supply.
Wi-Fi connection is unavailable, or off line constantly	1.Check router whether is 5Ghz (camera doesn't support now). 2.Device is far from router, or there is an obstacles between them.	1.Change to 2.4Ghz router, or wired connection 2.Change the installation's location, or add a new router as bridged network

Version:VC-RT.01

10