

Smart Home Alarm System

tuya[®] zigbee



Android / iOS



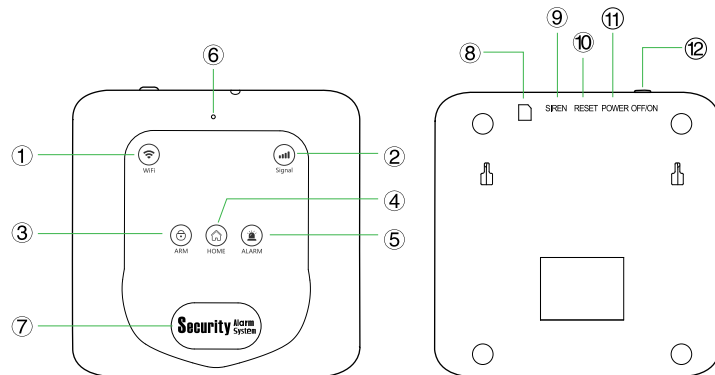
Product introduction

The smart security alarm kit is based on the intelligent security host, which is paired with PIR detector, door magnetic sensor, and wireless remote controller to build an intelligent security system. It not only can reach anti-theft alarming, but also be linked with smart sockets and devices to get to smart life.

Main Functions

- Connect to WiFi, App control
- Wireless two-way communication, no need wiring
- 50pcs detectors can be added, each detector can be programmed
- Low power-consumption design
- Accessories low power notification
- Volume adjustable
- Silent mode can be set
- Defense zones support Disarm, Arm, Home Arm, 24H Arm, Delay Arm, etc for option
- Built-in GSM module, can still alarm normally even power off in GSM mode
- Built-in back-up battery, have notification when power off or incoming call

Smart Alarm Panel:



- ① Wi-Fi Indicator: ON means Wi-Fi configuration successfully
- ② Signal Indicator: Flash slowly means Card-Reading successfully
- ③ Arm Indicator: ON means Arm successfully
- ④ Home Arm Indicator: ON means Home Arm successfully
- ⑤ Alarm Indicator: Flashes slowly means accessories coding; ON means Alarming
- ⑥ MIC: Speaking and Monitoring while calling
- ⑦ Loudspeaker: Play voice
- ⑧ SIM card slot: To load SIM card

- ⑨ **Wired Siren Interface:** Input the wired siren to connect to alarm host
- ⑩ **Reset:** Long press Reset for 5s for network configuration automatically;
If failed, continue to press Reset for 5s for network configuration by hand;
Short press Reset for coding accessories.
- ⑪ **USB Interface:** Input DC5V/2A.
- ⑫ **Powered by Battery Switch:** ON/OFF.

Fast Setting

Step 1: App download

- In App store or Google Play, search “SmartLife” and download; or Scan the below QR code.
- After downloading the App, please register according to the interface, and login
- After open the App, click <Register>, use your mobile phone number or e-mail address to register



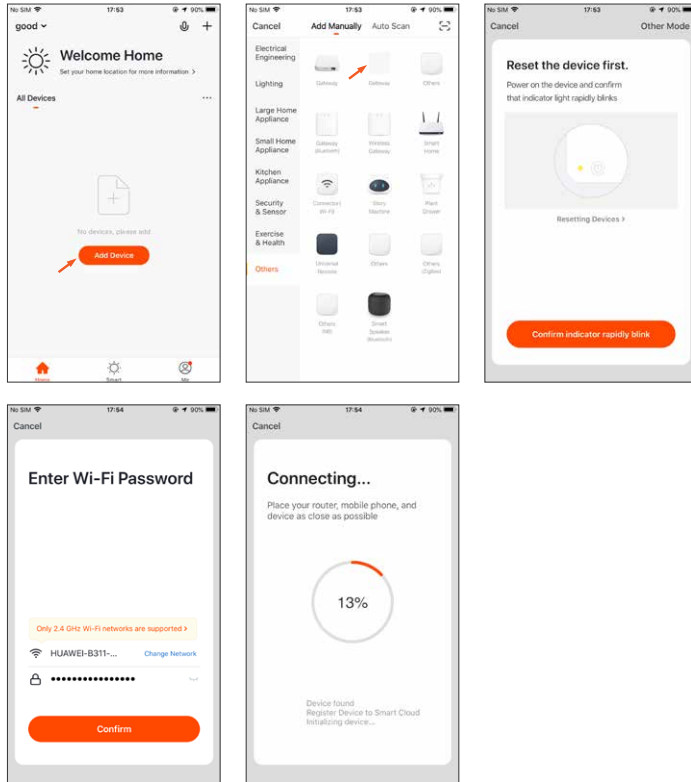
Android / iOS

Step 2: Alarm Panel Wi-Fi Connection

- ① Make sure your mobile phone already connected by Wi-Fi (Only support 2.4GHz Wi-Fi network)
- ② Open “TuyaSmart” App, Click “+” on the top right corner; Choose others - > Gateway (Wi-Fi)
- ③ Main panel gets into network connection status: Firstly switch on the alarm panel, long press [Reset] for 5s, release the key after hearing 1 beep sound, alarm panel will start network configuration automatically
- ④ Click “Confirm” in the App, and choose Wi-Fi, input Wi-Fi code, click “Confirm” to connect Wi-Fi; When Alarm Wi-Fi indicator is ON, means network connection OK.

P. S:

- The alarm panel should be very near to the router to make sure network configuration easily and fast.
- Don't support 5G Wi-Fi network at the moment.



Step 3: Detectors coding

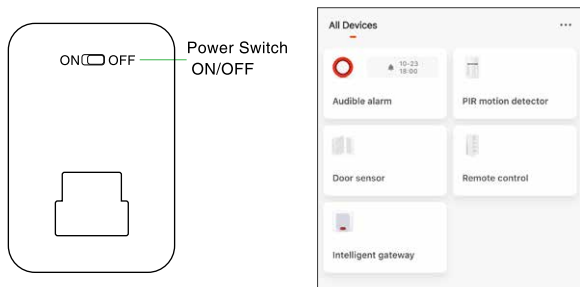
- If you buy our smart alarm panel, the sensors and remote controllers already coded into the alarm panel, then no need to add again.
- If you want to add new sensors or new devices which are factory restored, please choose the methods below for adding.

Method 1 (App): Open “TuyaSmart” App, in the Smart Gateway (Wi-Fi) ->Accessory ->Fast adding ->Smart alarm gateway to start coding (Alarm Indicator flashing slowly), switch sensors ON, Alarm indicator flashing 3 times means coding successfully. Sensors can be Door magnetic sensor, PIR sensor, Remote controller, Siren, Smart socket, and wireless keypad, etc.

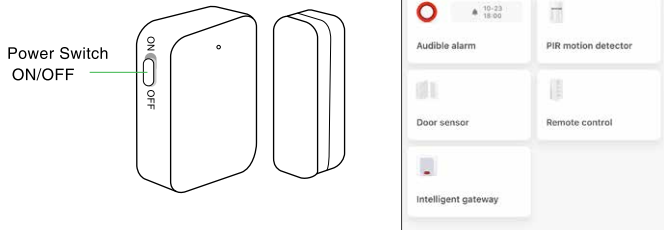
Method 2(App): Open “TuyaSmart” App, in the Smart Gateway (Wi-Fi) ->Accessory ->Add Sub-device ->Smart alarm gateway to start coding (Alarm Indicator flashing slowly), switch sensors ON, Alarm indicator flashing 3 times means coding successfully. Sensors can be Door magnetic sensor, PIR sensor, Remote controller, Siren, Smart socket, and wireless keypad, etc.

Method 3 (Alarm Panel): Short press RESET, alarm panel have a Dong sound, Alarm indicator flashes slowly, switch sensors ON, alarm indicator flashes 3 times and stop means coding successfully. Sensors can be Door magnetic sensor, PIR sensor, Remote controller, Siren, Smart socket and wireless keypad, etc.

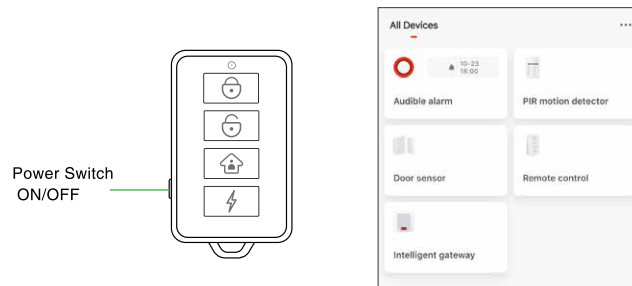
Adding PIR sensor: switch it ON, the alarm indicator flashes 3 times means coding successfully. PIR needs 1 minute to warm up. It will flash 3 times when warm up finish. (During warm up time, people shouldn't move in its detecting area)



Adding Door magnetic sensor: Switch it ON, the alarm indicator flashes 3 times and stop means coding successfully.



Adding remote controller: Switch it ON, the alarm indicator flashes 3 times and stop means coding successfully.



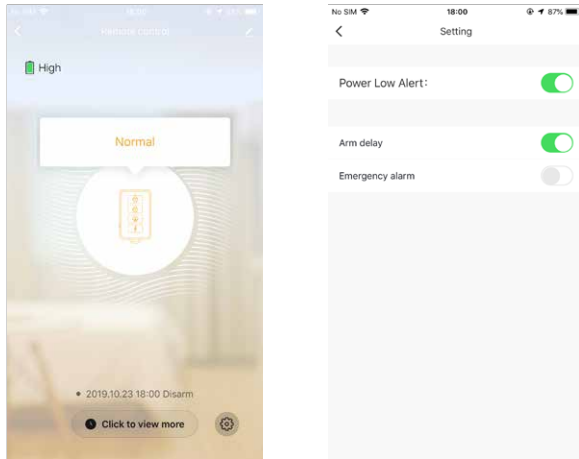
Adding wireless siren: Switch it ON, 1 Dee sound, and alarm indicator flashes 3 times and stop means coding successfully.



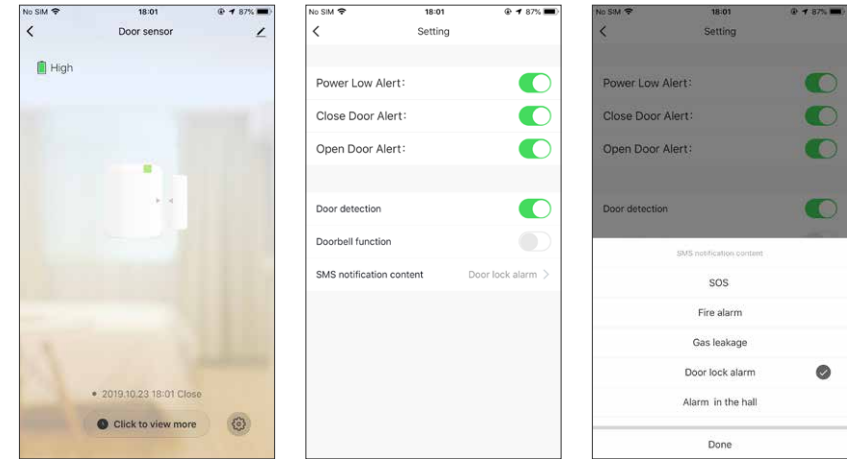
APP Operation:

Detectors Setting:

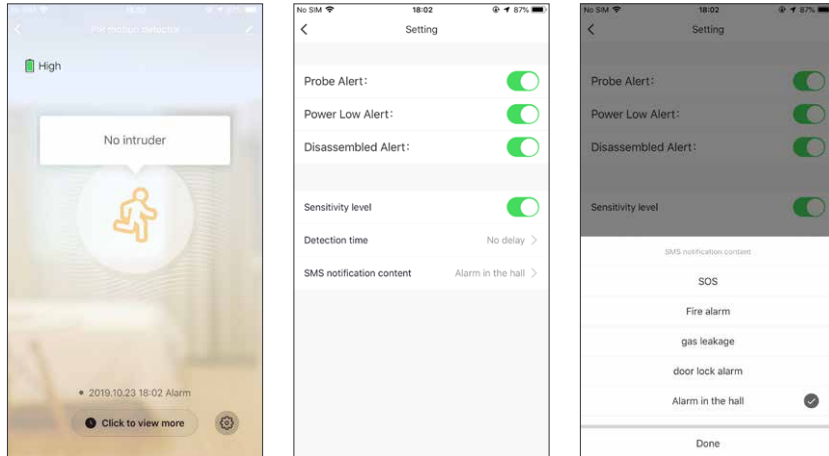
- Remote Controller Function Setting: Click the remote controller at Home Screen to set.



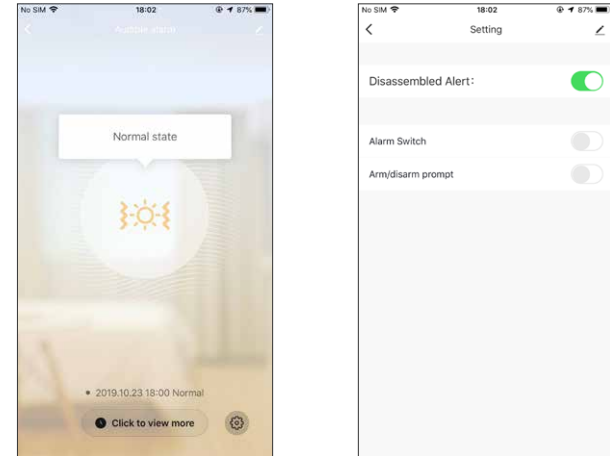
- Door Magnetic Sensor Function Setting: Click the door sensor at Home Screen to set.



- PIR Sensor Function Setting: Click the PIR sensor at Home Screen to set.



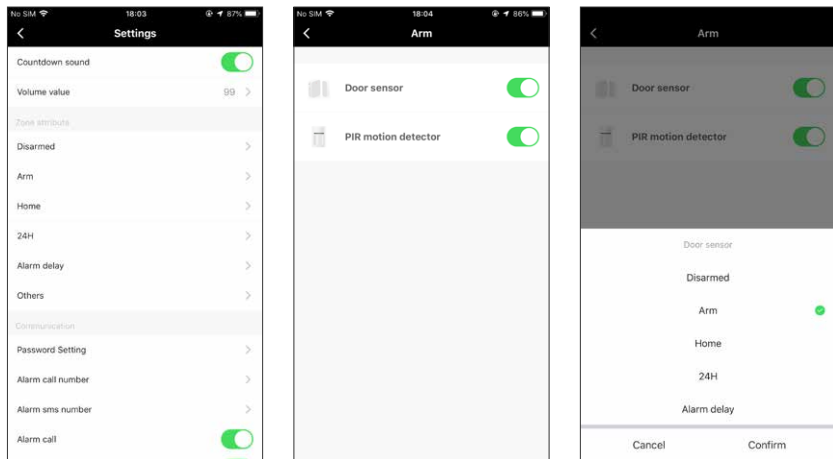
- Wireless Siren Function Setting: Click the wireless siren at Home Screen to set.



- Defence zones Program Setting: After all detectors paired, System Armed as default.

Bypass: Click the

- Zone programming settings: After all detectors are paired, the default is effective for arming, and the remote control is valid for 24 hours.
- Bypass: Click on the right switch of the detector to turn OFF, which means bypass detector. When the switch is ON, it means that the detector is enabled.
- Valid for 24 hours: first click on the effective area of the arming, pop-up pulldown, select 24 hours, click OK, the detector setting will be moved to within 24 hours.

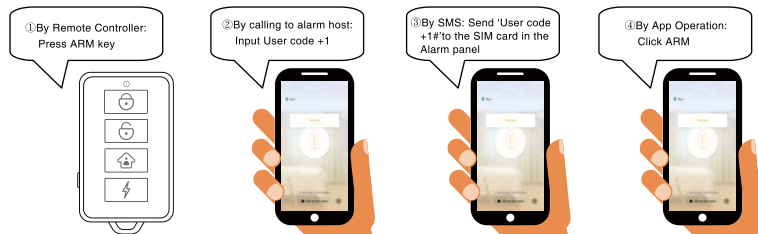


| | | | |
|----------------------|----------|----------|----------|
| Defense zone type | Disarm | Away arm | Home Arm |
| Disarm Valid | Alarm | No Alarm | No Alarm |
| Arm Valid | No Alarm | Alarm | No Alarm |
| Home Arm valid | No Alarm | No Alarm | Alarm |
| 24Hours Defense zone | Alarm | Alarm | Alarm |
| Delay Defense zone | Alarm | Alarm | No Alarm |
| Other | No Alarm | Alarm | Alarm |

Daily Operation

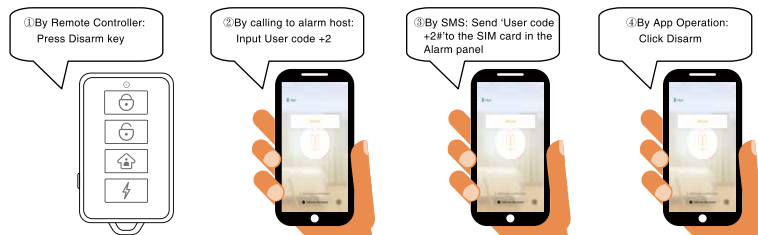
Arm

- When System Armed, alarm panel "ARM" indicator is Normally ON, and with voice notification: System Armed. Any intruders will trigger alarm. Ways below can Arm the system:



Disarm

In the status of disarm, the host "ARM" light is turn off, and the voice prompts: the system is disarmed, the alarm is cancelled, and it is in the disarmed state. The following 4 methods can be operated and disarmed:



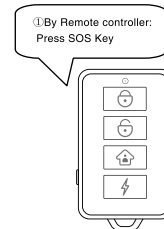
Home Arm

• When System is in Home Arm Status, The "ARM" indicator will be always ON with voice notification: System Home Armed. Open the valid detectors at this status, if any intruders to detect, system will alarm. Ways below can operate Home Arm:



SOS Emergency calling:

In Emergent situation, press SOS key on the remote controller to trigger alarming. Way below to start SOS alarm:
By Remote Controller: Press SOS key



Answer alarming call

When alarming triggered, the host will dial all preset numbers. Answer the call, you will hear alarming voice to help you know alarming information; Meanwhile, you can do operations below to reach remote control to the alarm host:

Press [1]: Stop alarming, system armed, the host stop calling.

Press [2]: Stop alarming, system disarm, the host stop calling.

Press [3]: Live Monitoring

Press [4]: Live Intercom

Press [*]: Read alarm message

P.S: Answer the call, only hear alarming voice, don't do any remote operation but hang up the phone, the host will continue to dial the other numbers till someone answer and do above operations. If no one answer the call, the host will repeat dialing all numbers 3 times, then stop automatically.

Remote Control:

Call the SIM card number of the alarm host, you can do operations below according to the host voice reminder (User code in default: 1234)

Press [1]: System Armed

Press [2]: System Disarmed

Press [3]: Live Monitoring

Press [4]: Live Intercom

Factory Restore

Open TuyaSmart App, click gateway to enter setting page. Click "Factory Reset", all indicators are ON, and a beep Dong, means factory reset OK. All devices will disappear from the App.

Note: After factory reset , the network needs to be re-configured, all sensors are removed, and all settings will be restored to the factory default settings. Please note.

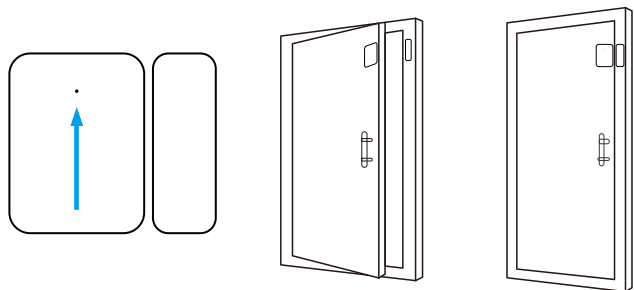
Installation

Smart Alarm Panel Installation:

Please attention, do not place the alarm panel and router too far, better for 2 to 5 meters.



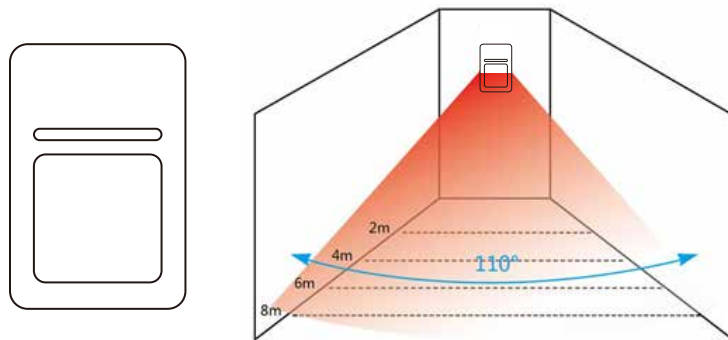
Door Sensor



Please attention:

- ① Magnetron distance is less than 10mm to install
- ② After installed, open the door to test, door sensor indicator is ON proves installation OK; (Only after pair to alarm host successfully, the indicator will be ON when open or close door)
- ③ When open/close door, App report low-voltage, replace battery as soon as possible to make sure door sensor working normally.
- ④ Transmitting distance is less than 100m in open air, and please test after installed; Different obstacles will have different transmitting distance;
- ⑤ Push the cover up to open, and replace the battery.

PIR Sensor



To reduce the false alarm, something to be attention when we install the PIR sensor:

1. Away from the straight sunshine
2. Do not face the big object which is easy to swing
3. Do not face the cold and heat air vent or cold and heat source
4. The furniture, miniascape, or any other isolations should be away from the detecting scope

5. Do not install 2 or more detectors in the same area or it will cause the interference when alarm
6. When open/close door, App report low-voltage, replace battery as soon as possible to make sure door sensor working normally
7. Detecting distance is no more than 8m, and transmitting distance is no more than 150m in open air. Please test after installed. Different obstacles will have different distance.

Parameters

Smart Alarm Panel

Input voltage: DC5V / 2A

W-Fi standard: IEEE 802.11 b/g/n

Radio Frequency: 2.4GHz (Both transmitting and Receiving)

Wireless Distance: $\leq 150\text{m}$ (In open air)

Working Temperature: -10°C - $+50^{\circ}\text{C}$

Humidity: $\leq 90\%RH$

Size: 138*137*21.8mm

Remote Controller

Input voltage: DC3V CR2450

Standby current: $\leq 15\mu\text{A}$

Alarm current: $\leq 10\text{mA}$

Wireless Frequency: 2.4GHz

Wireless distance: $\leq 150\text{m}$ (In open air)

Working Temperature: -10°C - $+50^{\circ}\text{C}$

Door Magnetic Sensor

Input voltage: DC3V CR2450

Standby current: $\leq 15\mu\text{A}$

Alarm current: $\leq 20\text{mA}$

Wireless Frequency: 2.4GHz

Wireless distance: $\leq 150\text{m}$ (In open air)

Working Temperature: -10°C - $+50^{\circ}\text{C}$

Humidity: $\leq 80\%RH$

PIR Motion Sensor

Input voltage: DC3V CR123A

Standby current: $\leq 35\mu\text{A}$

Alarm current: $\leq 35\text{mA}$

Wireless Frequency: 2.4GHz

Wireless distance: $\leq 150\text{m}$ (In open air)

Detecting Distance: $\leq 8\text{m}$

Installing Angle: 110°

Working Temperature: -10°C - $+50^{\circ}\text{C}$

Humidity: $\leq 80\%RH$

Wireless Siren

Input voltage: DC5V 2A

Standby current: $\leq 40\text{mA}$

Alarm current: $\leq 300\text{mA}$

Wireless Frequency: 2.4GHz

Wireless distance: $\leq 150\text{m}$ (In open air)

Working Temperature: $-10^{\circ}\text{C} - +50^{\circ}\text{C}$

Humidity: $\leq 80\%\text{RH}$

Maintenance

System Checking

Although the alarm system is used everyday, periodical maintenance and test are required to assure that it can run stably, reliably and safely. Usually thorough test must be performed on the alarm main unit every three months. You'd better check the detector once a month; if not permitted by condition, you should check it at least every three months.

Check the main unit:

1. Whether it can arm/disarm normally on App.
2. Whether it can dial the number for alarm normally.
3. Whether it can receive wireless detectors' signal normally
4. Whether the back-up battery can work normally.

Check the wireless detectors:

1. Trigger wireless detectors to see if system can alarm normally.
2. Check all detectors' batteries to see if it's in low voltage.
3. Check whether wireless detectors can send signal to the main unit normally.

Notes:

1. Please do not disassemble, repair and alter the products without permission, or it may cause accidents and faults.
2. Do not drop this product on the ground or on hard objects, as it may lead to massive impact to cause faults and damages.
3. Without approval and consent of relevant authorities, please do not set "110", "119" or the alarm phone number of police station for this main unit.

Common Fault

| Fault | How to Solve |
|--|---|
| Alarm host can't connect to Wi-Fi | <ul style="list-style-type: none"> • Make sure if it is too far for the alarm host and the router |
| | <ul style="list-style-type: none"> • Make sure the router is 2.4GHz |
| | <ul style="list-style-type: none"> • Make sure if the local IPS has limitation to the quantity of devices to connect to Wi-Fi |
| Alarm host setting can't be set on App | <ul style="list-style-type: none"> • Make sure if the network is good or not |
| App has no notification to receive | <ul style="list-style-type: none"> • Make sure if remove the App; Or App authority open or not |
| Don't dial numbers when alarming | <ul style="list-style-type: none"> • Make sure if the system is Armed or not • Make sure the telephone numbers input correct • Make sure if set delay alarm or not • Make sure if the SIM card needs charge |

| | |
|---|---|
| Can't detect network | <ul style="list-style-type: none"> • Make sure SIM card is GSM or not • Don't set PIN for SIM • Battery is low-voltage |
| Remote control is not sensitive | <ul style="list-style-type: none"> • Check the GSM signal good or not • Change SIM card |
| Can't remote operate to the alarm host | <ul style="list-style-type: none"> • Make sure if input the correct USER code |
| The host can't receive the alarm signals from accessories | <ul style="list-style-type: none"> • Make sure accessories paired to the host successfully • Make sure the accessories OK |
| Alarm still in real-time after set Delay Arm | <ul style="list-style-type: none"> • Make sure if programmed the defense zones delay |
| No SMS notification when the host Power Off | <ul style="list-style-type: none"> • Make sure if have set alarm telephone number when the host power off |
| Siren not working | <ul style="list-style-type: none"> • Make sure if connect to AC power • Make sure if set close the siren when alarming |