

## Contents

Welcome to use.....	2
Features.....	2
Packaging accessories.....	3
Technical specification.....	3
Product structure.....	4
Use introduction.....	5
1.Install battery.....	5
2.Charge battery.....	6
3.Power on and power off.....	6
4.Use digital video magnifier.....	7
Functions.....	8
1. Color mode switch.....	8
2.Zoom rate adjustment.....	8
3.Image freeze and unfreeze.....	9
4.Backlight brightness adjust.....	9
5. Easy mode switch.....	10
6.Beep Switch.....	10
7.Memory function.....	10
8.Handwriting function.....	11
9.Power saving function.....	11
10.Low battery tips.....	11
11.Connecting to TV.....	12
12.Connecting to computer.....	12
Computer configuration requirements.....	13
Precautions.....	13
Problems solutions.....	14

---

## Welcome to use

Thank you for your choice of our company portable digital video magnifier!

Please read and keep this manual carefully. It will help you to use the magnifier better and achieve the best magnified effect.

## Features

Our 4.3 inch portable digital video magnifier is our company grand launch with high performance and high cost-effective performance.

- Speed 60fps design, no lag, no smear, smooth reading;
- 4.3-inch screen, high-definition and big screen;
- Using a new intelligent algorithm, intelligent to adapt to the image scene, any environment easy to read;
- Ultrathin style and zero distance design with handle, portable;
- Using ergonomic foldable handle design, comfortable reading and fluent handwriting;
- Custom-made high-end lens, large filed angle and extended depth of field, more text and continuous reading;
- 2X-32X infinite amplification, clear and smooth;
- Convex color button design, high contrast and clear feel;
- 15 kinds image enhancement modes to meet different people needs;
- Picture freeze is convenient to take a close look;
- Operation beep prompts is simple and easy to use for the visually impaired;
- Memory function can save the user all last settings automatically and remember the user's habits;
- AV can connect to TV to provide greater and clearer visual effects;
- Lens center design is more in line with the normal use habit;

## 4.3 Inch LCD HD Portable Digital Video Magnifier

---

- High capacity removable battery, the ultimate power-saving design, 4 hours runtime.
- Intelligent power-saving design; Automatic shut-down after the screen is static and no operation for 2 minutes ; Environmental protection and energy conservation;

New algorithm, new design and new configuration will bring you smooth, high-definition, portable new experience!

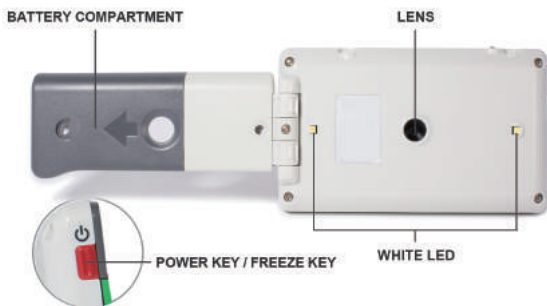
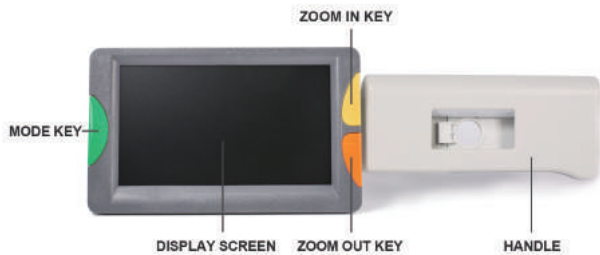
### Packaging accessories

- |                   |      |                      |      |
|-------------------|------|----------------------|------|
| ● Power adapter   | 1pc  | ● Manual             | 1pc  |
| ● Lens cloth      | 1pc  | ● Video output cable | 1 pc |
| ● Lithium battery | 2pcs | ● Protecting jacket  | 1pc  |

### Technical specification

- Screen size: 4.3 inch colorful LCD screen(480X272)
- Pixel size: 300,000
- Zoom rate: 2X to 32X infinite amplifying
- Color pattern: 15 kinds
- Brightness adjustment: support
- Memory function: support
- Image freeze : support
- TV output: support
- Operation prompt: support
- Folding handle: support
- Working hours: last over 4 hours continuously
- Battery capacity: 2X750mAH lithium battery chargeable.
- Dimension: Handle open, 238mm (L) x 76mm (W) x 17.5mm (H)  
Handle closed 123mm (L) x 76mm (W) x 39mm (H)
- Weight: 217g(Excluding the battery)
- Working temperature: 0 C ~ 40 C
- Input voltage: DC9V ~ 12V 1A

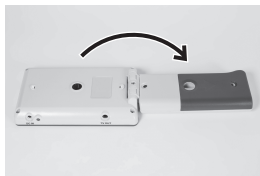
## Product structure



## Use introduction

### 1. Install battery

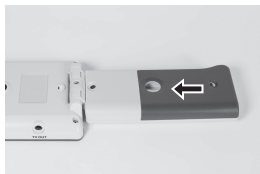
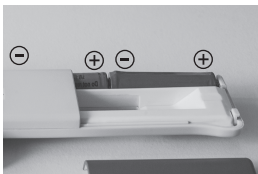
- Invert video magnifier and open the handle



- Hold the battery cover and push the cover towards edge to open



- Install the battery according to the positive and negative tips



- Cover the battery box, sliding in place when hearing the "click" sound

## 2. Charge battery

Connecting to  
AC power



- Connecting video magnifier to adapter;
- Connecting adapter to AC power;
- Charging light( red light) is on when charging;
- Charging light(red light) will be off when complete charge
- At the first time, please charge the battery to full
- When low battery tips, please charge the battery in time

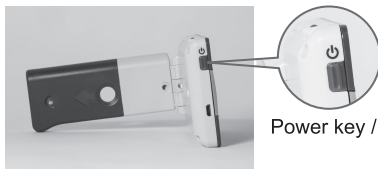
### Attention:

In the charging process, please keep the charger and the video magnifier have good heat dissipation and ventilation, so as to avoid danger caused by overheat.

If the power adapter is not connected to the battery, the charging lamp (red) will flash quickly

**Do not use nickel-metal hydride, alkaline, dry battery charging, be sure to use the original battery.**

## 3.Power on and power off

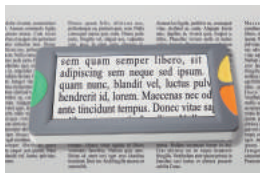


Power key / Freeze key

### 4.3 Inch LCD HD Portable Digital Video Magnifier

- Press **power key** for 3 seconds to open magnifier; the green indicator will light and enter the magnifying mode;
- Start using when screen center is in alignment with the reading.
- Adjusting zoom rate, enhanced mode, freezing the screen and other operations can achieve the best reading.
- Press **power key** for 3 seconds to close magnifier;

#### 4. Use digital video magnifier



Reading in handle closed



Reading in hand hold the handle

The magnifier equips with a folding handle that closes the handle and is placed directly above the reading; Or opens the handle, and the center of the screen is used against the reading. Close handle to make the magnifier and the desktop into a corner, ergonomic. When reading, the neck is in natural state, relaxed and comfortable.

Color mode switch: Press **Mode key** to switch color mode;

Zoom in and out: Press **Zoom in key** to enlarge image and press **Zoom out key** to shrink image.

Freeze and unfreeze image: Press **freeze key** to freeze image and repress **freeze key** to unfreeze image.

---

## Functions

### 1.Color mode switch

Switch the LCD screen image enhancement mode by **Mode key** to meet the different needs.

15 kinds of image enhancement modes:

- |   |  |
|---|--|
| 1)color mode                            | 9)yellow-background and black-text mode  |
| 2)negative mode                         | 10)blue-background and yellow-text mode  |
| 3)monochrome mode                       | 11)yellow-background and blue-text mode  |
| 4)white-background and black-text mode  | 12)white-background and green text mode  |
| 5)black-background and white-text mode  | 13)green-background and white-text mode  |
| 6)white-background and blue-text mode   | 14)white-background and orange-text mode |
| 7)blue-background and white-text mode   | 15)orange-background and white-text mode |
| 8)balck-background and yellow-text mode |  |

By holding down the **zoom out key** and pressing the **mode key**, streamline mode (7 kinds) and normal mode (15 kinds) can be switched.

### 2.Zoom rate adjustment



2XAmplifying



16XAmplifying



32XAmplifying

**Zoom in Key** or **zoom out Key**, adjusts zoom rate to achieve the best magnifying effect.

This magnifier can zoom in or zoom out infinitely between 2X~32X;



### 3. Image freeze and unfreeze



Freeze image after viewfinder



Watching image after freezing

**Freeze key** can freeze image and can observe the image at close distance, which is not easy to watch before freezing;

Repress **Freeze key** to unfreeze image and recover real-time view.

### 4. Backlight brightness adjust



20% brightness



60% brightness



100% brightness

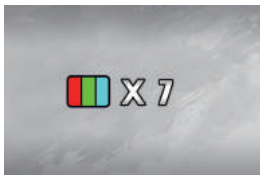
In order to achieve optimal visual effect, LCD backlight brightness can be adjusted to bright or dim by holding down **mode key** continuously and pressing **zoom in key** or **zoom out key**.

20%, 40%, 60%, 80% and 100% brightness are optional.

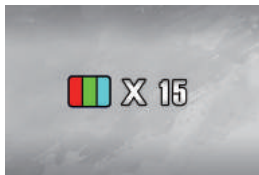
**Attention:** Backlight brightness increased will shorten battery runtime.

---

## 5.Easy mode switch



Streamline mode(7 kinds)



Normal mode(15 kinds)

By holding down the **zoom out key** and pressing the **mode key**, streamline mode (7 kinds) and normal mode (15 kinds) can be switched to meet different needs.

## 6.Beep Switch



Beep volume on



Beep volume off

By holding down the **zoom in key** and pressing the **mode key**, beep volume can be on or be off.

## 7.Memory function

After turning off ,memory function can save the user all the last settings automatically and remember the user's habits.

### 8. Handwriting function

The video magnifier supports handwriting function. Open its handle and write.



Hand hold handwriting

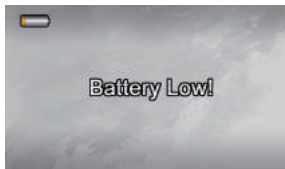


Hold the handle writing

### 9. Power saving function

The video magnifier has intelligent power saving function. When no key is operation and the screen is still for 2 minutes, it will automatically shut down to save power.

### 10. Low battery tips

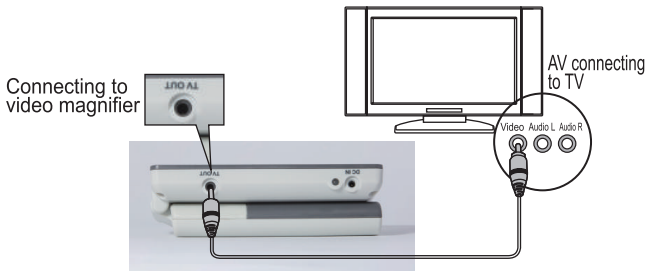


Low battery tips

Low battery tips function: Screen will display the low power icon at low battery, and the power light flashes.

When low battery tips, please charge the battery in time.

## 11.Connecting to TV

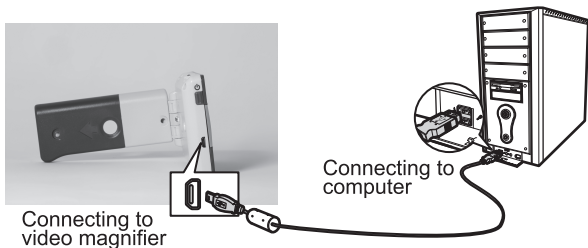


Connect magnifier to TV by AV video cable to get a bigger, clearer display.

When the magnifier enters the video output mode, the LCD screen will turn off automatically

## 12.Connecting to computer

After connecting to computer by USB cable, the computer can recognize magnifier's the mass storage to playback the saved pictures and voice memo files on the computer.



### **Computer configuration requirements**

This digital video magnifier requires the PC to meet the following requirements:

- Windows® Win7/Vista/XP operating system
- Intel® Pentium 4, 2.8 GHz CPU or larger
- At least 1GB RAM;
- Standard USB 2.0 or above
- 512MB or higher video card;

### **Precautions**

In order to keep digital video magnifier works in the best condition, please read the following notes carefully:

- Please do not expose it directly to high temperatures or sunlight
- Please keep it away from moisture, rain, liquids and chemicals
- Please do not use it near to electronic equipments, and medical equipments, which are not under insufficient shield.
- Please ensure that using it at temperatures between 10 ° C and 40 ° C;
- Please ensure that it is stored at temperatures between -20 ° C and 65 ° C
- Do not try to repair or open the aids to avoid damaging warranty
- Do not mix old and new batteries
- Please use the matching power supply and battery, otherwise danger or loss will occur;
- When the child use, the guardian should be instructed to avoid accidents
- Before cleaning, unplug power and remove battery. Using soft cloth to clean it; Alcohol solvents or other cleaning agents can not be used;

### **Warning:**

Do not use it during charging.

Do not use nickel-metal hydride, alkaline, dry battery charging, be sure to use the original battery.

---

## Problems solutions

Problems	Solutions
Black screen	Make sure the battery is installed before using Battery is dead, charging it ; Make sure the lens focus on the reading
Can not be on	Battery is dead, charging it ;
aNo sound	Confirm if the beep voice is off
The image is too dark or too bright	Make sure the lens focus on the reading Confirm if the reading is at the appropriate distance
Image is blurred or dirty	Wipe the LCD screen and lens goggles Confirm if the reading distance is too far
Reading text is too small	Adjust zoom rate by pressing the zoom in key
Connected to the TV, but the TV is not displaying	Make sure the TV is on When using the AV cable, switch the TV input to AV input Make sure the video cable is properly connected to the magnifier and TV