



2019 Newest catalogue

Safety miner lamps

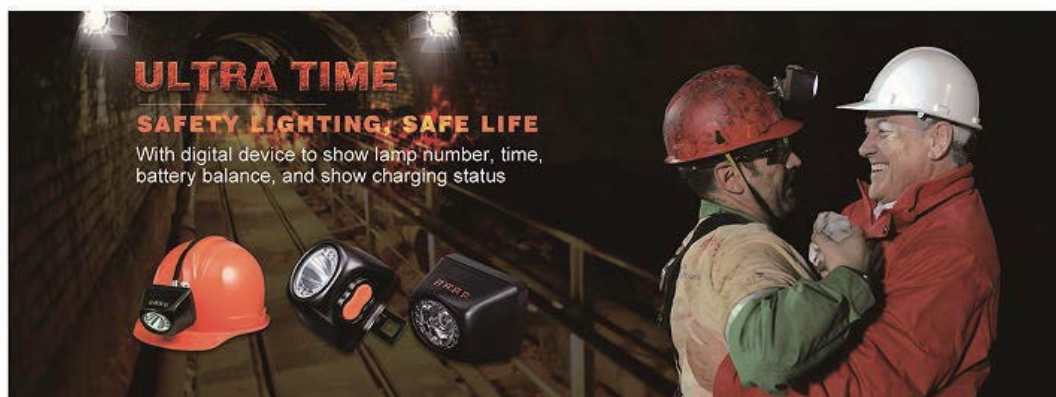


■MODEL: ON-KL4.5LM-R

- Tracking: Tracking of location;
- Evacuation notifications: flashing of light for Evacuation notifications;
- Man-down detection;
- Emergency assistance request;
- Emergency stop signal to vehicles in range;
- Proximity warning: Proximity warning to vehicles in range;
- Acknowledgment of evacuation notifications.
- online/offline indicator;
- daily mandatory self-test procedure

■MODEL: ON-KL4.5LM

- Digital and cordless miner cap lamp
- More than 120 lumens light source, max 7000lux for main light
- With digital device to show lamp number, time, and battery balance, And remind recharging when battery balance not enough for 1 hour lighting
- 5.2Ah li-ion battery, more than 15 hours lighting time
- Certificate: CE, ATEX, MSHA, SABS
- EX Mark: Exia IIB T4
- Protection Class: IP68



Safety miner lamps



■MODEL: ON-KL6LM

- Digital & Cordless cap lamp with inductive charging system
- 1W 140lm CREE LED main light, 2pcs auxiliary light;
- OLED screen to show lamp series number, time, battery balance and working mode
- lighting mode: main light high bright 15000lux, main light half bright, auxiliary light
- lighting time: high bright 13h, half bright:26h, back up:100h
- battery capacitance: 6.6Ah, charging time<8h
- Protection Class: IP68



Safety miner lamps



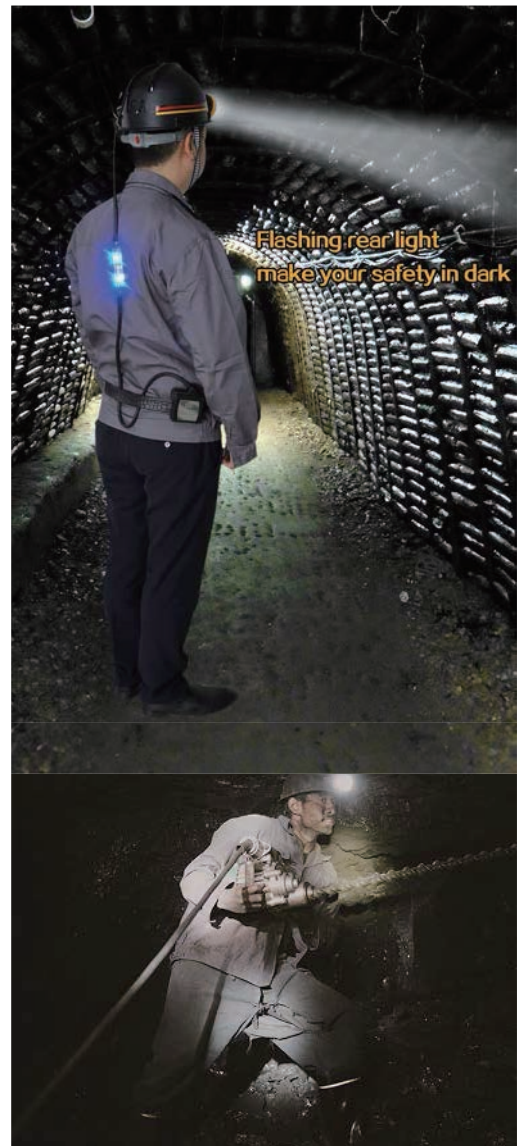
ON-KL5LMC



ON-KL5LMD



ON-KL5LM(D2)



■MODEL: ON-KL5LMC/ON-KL5LMD/ON-KL5LM(D2)

- ON-KL5LM(C)/(D)/(D2) 15000LUX cap lamp with low power Indication
- ON-KL5LM(C) with Mechanical twist switch
- ON-KL5LM(D) with push button switch
- ON-KL5LM(D2) with push button switch and safety rear light
- 7.8Ah li-ion battery more than 15 hours lighting
- Certificate: CE/ATEX
- Ex mark: Exia IIB T4
- Protection Class: IP68
- Application:
Mining, Electric power plant, railways, oil plant, dockyards
Police, firefighting, military, Patrol, overhaul, repair, etc.

Safety miner lamps



■MODEL: ON-G5

- ON-G5 15000lux mining light with low power indication and battery bag
- 1W 150lm main light, 6pcs SMD auxiliary light
- with low power indicator to remind the user to recharge it or change to auxiliary light and leave from the work place
- 7.8Ah li-ion battery, charge time $\leq 5h$, with short-circuit protection over charge and over discharge protection
- more than 15 hours lighting



■MODEL: ON-KL2M

- Cordless and portable mining cap lamp
- 1W 80 lumens main light and 6pcs backup light, more than 4000lux
- 2.2Ah Li-ion battery, more than 15hours lighting



■MODEL: ON-KL2.5M

- Mini miner cap lamp
- 80 lumens main light and 6pcs backup light
- 2.8Ah li-ion battery, more than 15 hours lighting



■ON-MODEL: ON-HLT05

- Plastic safety helmet with lamp mount and buckle
- Fire retardant anti-static, reflective strips

EXPLOSION PROOF INDUSTRIAL LIGHTS



■MODEL: ON-DL618

- 40W, 80W and 40W with Emergency function optional
- Die cast aluminum housing with corrosion proof polyester powder coated, tempered glass lens
- Normal working: 4000 lumens for 40watt, and 8000lm for 80watt
- Under Emergency: 2000 lumens, 20watt, and 1.5 hours working time
- Input voltage: AC85V~265V
- Dimension: $\varnothing 90 \times 800$ mm, Unit weight: 8kg
- CCT: 5000-7000k
- Beam angle: 120 degree
- Ex mark: Ex d II B+H2 T5 Gb

■MODEL: ON-DL618



- 60W Ex-proof LED light
- 25/120/180 degree beam angle optional
- Die cast aluminum housing with super corrosion proof polyester powder coated
- 10mm special made toughened-glass lens can bear 7J strike
- Output lumens: 6000 lumens,
- Input voltage: DC24V~DC36V, or AC85V~265V.
- heat-resistance, shock resistance, corrosion-resistance, explosion proof and waterproof
- Ex mark: Exd IIC T5 Gb
- Dimension: 278*263*170mm
- Net weight: 6.6KG



**LEADERS OF SAFETY LIGHTING,
ONE TIME REPLACING, SIX
YEARS MAINTENANCE-FREE**

MORE THAN 50000 HOURS LONG LIFE SPAN

EX MARK: EX D IIB+H2 T5 GB / EX TD 21 T95°C

IP:IP67

EXPLOSION PROOF INDUSTRIAL LIGHTS



■MODEL: ON-DMT30

- 3000Lumens Explosion proof tunnel light
- Stainless steel housing
- Absolutely corrosion proof
- Ex mark: EXDI M2 (Exd I, II Group C,D T5)
- Certificate: CE/ATEX,CSA,FCC
- Application: coal mine , metal mine, offshore oil plant, marine
- Dimension:27.5*12*12cm
- Net weight:5kg



■MODEL:ON-DMT60

- 6000Lumens Explosion proof tunnel light
- Stainless steel housing
- Absolutely corrosion proof
- Ex mark: ExdI, Exd IIB T5
- Certificate: CE/ATEX,CSA,FCC
- Application: coal mine ,metal mine, offshore oil plant, marine
- Dimension:39.98*30.05*



EXPLOSION PROOF INDUSTRIAL LIGHTS



■MODEL: ON-DL602-08

- LED power:40watt
- Output lumens:4000lumen
- Input voltage:DC24V/36V or AC110V-220V
- Dimension :204*278*115mm
- EX Mark: ExnA II T3



■MODEL: ON-DL602-12

- LED power:60watt
- Output lumens:6000lumen
- Input voltage:DC24V/36V or AC110V-220V
- Dimension :284*278*115mm
- EX Mark: ExnA II T3



■MODEL: ON-DL602-20

- LED power:100watt
- Output lumens:10000lumen
- Input voltage:DC24V/36V or AC110V-220V
- Dimension :444*278*115mm
- EX Mark: ExnA II T3



■MODEL: ON-DL602-32

- LED power:150watt
- Output lumens:15000lumen
- Input voltage:DC24V/36V or AC110V-220V
- Dimension :684*278*115mm
- EX Mark: ExnA II T3

Dock Lights



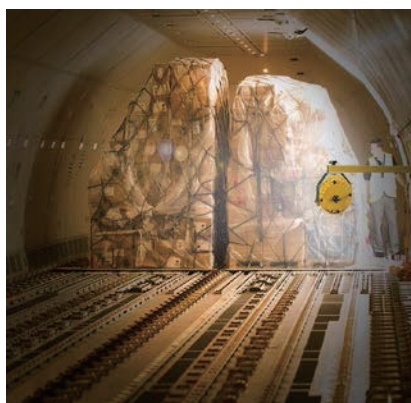
■MODEL: ON-DL619

- 30W dock/warehouse loading light
With 2850Lumens
- Aluminum body with supper corrosion proof polyester coated, toughened-glass lens
- Input voltage: AC110-265V,DC 24-36V
- Beam angle: 60 degree (optional)
- Certificate: CE, IP67,ROHS
- Application:
Dock light, Drilling rig area and heavy industry machinery and equipments



■MODEL: ON-DL601F

- 3400Lumens Explosion-proof flood light
- Ex mark: EXD IIC T6,IP67,WF2
- Application:
Flammable area and Explosive Hazard Zone I&II
Dock light, Drilling rig area and heavy industry machinery and equipments
- Dimension:16*8.5cm
- Net weight:1.82kg



LED high bay lights



■MODEL: ON-HBC100W

- 100W LED high bay light
- 126pcs Nichia SMD LED 3030
- HBG Meanwell power-supply with input voltage: AC100-277V
- Light color :Daylight white, Warm white
- CCT: Daylight white: 5000K,Warm white:3000K;
- Output lumens: 11000 lumens for daylight white, 10500 lumens for day white
- Viewing Angle: 115°



■MODEL: ON-HBC120W

- 120W LED high bay light
- 154pcs Nichia SMD LED 3030
- HBG Meanwell power-supply with input voltage: AC100-277V
- Light color :Daylight white,Warm white
- CCT: Daylight white: 5000K,Warm white:3000K;
- Output lumens: 13200 lumens for daylight white, 13000 lumens for warm white
- Viewing Angle: 115°



■MODEL: ON-HBC150W

- 150W LED high bay light
- 196pcs Nichia SMD LED 3030
- HBG Meanwell power-supply with input voltage: AC100-277V
- Light color :Daylight white,Warm white
- CCT: Daylight white: 5000K,Warm white:3000K;
- Output lumens: 16500 lumens for daylight white, 16000 lumens for warm white
- Viewing Angle: 115°



■MODEL:ON-HL10B-100W

- 100W LED high bay light
- 119pcs Philips-3030 LED
- Meanwell power supply with input voltage: AC90-305V
- Light color :Natural white,day white
- CCT: Cold white: 5000-7000K,Warm white: 2700~3500K;
- Output lumens: 11000 lumens for natural white, 10500 lumens for day white
- Viewing Angle: 125°



■MODEL: ON-HL10B-150W

- 150W LED high bay light
- 182pcs Philips-3030 LED
- Meanwell power supply with input voltage: AC90-305V
- Light color :Natural white, day white
- CCT: Cold white: 5000-7000K,Warm white: 2700~3500K;
- Output lumens: 16800 lumens for natural white, 16200 lumens for day white
- Viewing Angle: 125°



■MODEL:ON-HL10B-200W

- 200W LED high bay light
- 238pcs Philips-3030 LED
- Meanwell power supply with input voltage: AC90-305V
- Light color :Natural white,day white
- CCT: Cold white: 5000-7000K,Warm white: 2700~3500K;
- Output lumens: 21800 lumens for natural white, 21200 lumens for day white
- Viewing Angle: 125°

LED off road lights



■MODEL: ON-AL0740 5.5"

- LED power:40w
- Input Voltage:10-40V
- IP rate:IP67
- Housing material: aluminum housing
- mounting bracket: stainless steel
- Dimensions:5.5 inch
- Lumen:2800lm
- Beam: Spot/ Flood beam



■MODEL: ON-AL0860 5.2"

- LED power:60w
- Input Voltage:9-32V
- IP rate:IP68
- Housing material: aluminum housing
- mounting bracket: stainless steel
- Dimensions:5.2 inch
- Lumen:5200lm
- Beam: Pencil/ Flood beam



■MODEL: ON-AL0790 5.2"

- LED power:90w
- Input Voltage:10-30V
- IP rate:IP67
- Housing material: aluminum housing
- mounting bracket: stainless steel
- beam:8degree /90degree
- Dimensions:5.2 inch

LED off road lights



■MODEL: ON-AL0548 5"

- LED power:48w
- Input Voltage:10-30V
- IP rate:IP67
- Housing material: aluminum housing
- mounting bracket: stainless steel
- Dimensions:127mm*90mm*160mm
- Lumen:3800lm
- Beam:30degree Spot/60degree Flood



■MODEL: ON-AL0670 6"

- LED power:70w
- Input Voltage:10-60V
- IP rate:IP67
- Housing material: aluminum housing
- mounting bracket: stainless steel
- Dimensions:155mm*102mm*155mm
- Lumen:7000lm
- Beam:10degree Spot/30degree Flood



■MODEL: ON-AL0724 5.5"

- LED power:24w
- Input Voltage:10-30V
- IP rate:IP67
- Housing material: aluminum housing
- mounting bracket: stainless steel
- Dimensions:194mm*106mm*52mm
- Lumen:2200lm
- Beam: Spot/ Flood beam

DVR flashlights



■MODEL: ON-DFC14

- Digital Video and Audio recording flashlight with display
- It has additional red and green signal light for safety instruction
- With WIFI signal to connect with IPAD or mobile phone
- With inbuilt GPS to show position on time
- 32GB/64GB built-in memory storage card
- 6.6Ah li-ion rechargeable battery
- 16M camera pixel

Operation on IPAD



Application



DVR flashlights



■MODEL: ON-DFC10

- Digital Video and Audio recording flashlight with display
- 8GB/16GB/32GB built-in memory storage card
- 2.2Ah li-ion rechargeable battery
- 12M pixels camera sensor



■MODEL: ON-DFC05

- Digital Video and Audio recording flashlight with display
- 8GB/16GB/32GB built-in memory storage card
- 2.2Ah li-ion rechargeable battery
- 12M pixels camera sensor



■MODEL: ON-DFC03

- Digital Video and Audio recording flashlight
- 8GB/16GB/32GB built-in memory storage card
- 1 watt 100lumens high power LED

Safety flashlight



■MODEL: ON-DFL01

- Light source:3watt 180lumens LED
- 2.2Ah Li-ion battery
- Lighting time more than 14 hours



■MODEL: ON-DFL04

- Light source:3watt 180lumens LED
- 2.2Ah Li-ion battery
- Lighting time more than 14 hours



■MODEL: ON-DFL07

- Light source:3watt 180lumens LED
- 2.2Ah Li-ion battery
- Lighting time more than 14 hours



■MODEL: ON-DHM02

- Light source:3watt 180lumens LED
- 4.4Ah Li-ion battery
- Lighting time more than 14 hours
- Adjustable illumination angle within 90 degree, Rubber and plastic housing