

Latest Artificial Intelligence Detection

Make Security Inspection More Intelligent



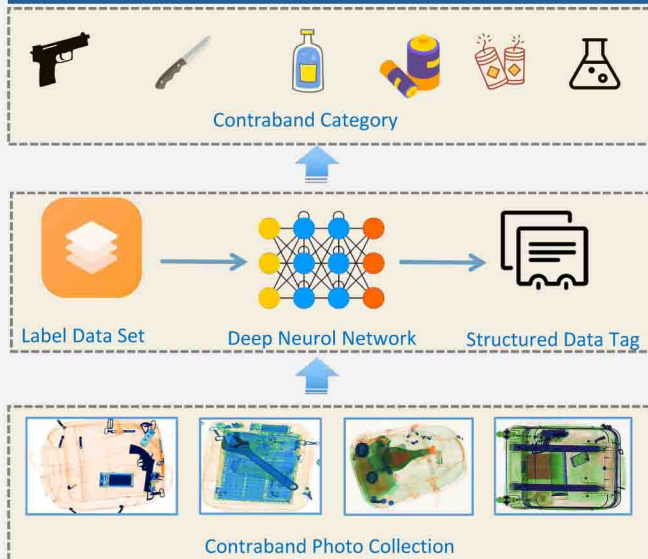
Background

With the continuous expansion of cities scale and the increasingly complex social situation. The city's requirements for safety are constantly increasing, which leads to continuous improvement of security inspection costs. The contradiction between limited security resources and the growing demand of society has become increasingly prominent.

Security inspection is the most key step to ensure the safety of cities, X-ray baggage scanner is an essential device in the link. But it's been a long time that the inspection images are recognized by human eyes. The degree of recognition is heavily relies a person's mental state. So easy to miss the test due to fatigue and inattention. And employees have to undergo relatively long training before they start work. The loss of personnel can easily lead to a shortage of manpower in security inspection.

Safeagle deeply learns the image recognition kit of the X-ray inspection machine, which can accurately point out prohibited items quickly and effectively reduce security inspection costs and improve security inspection efficiency.

Technical Principle



Advantages



Adapt to all X-ray Security Inspection Machines System

Seamlessly integrates on any new or existing the X-ray baggage scanner systems anywhere without changing the structure and shape (no need to develop docking).



High Accuracy & High Recognition

More than millions training data, covering a large variety of scenarios, contraband, recognition rate > 80%, accuracy > 85%, to catch more threats while reducing operating costs and increasing throughput.



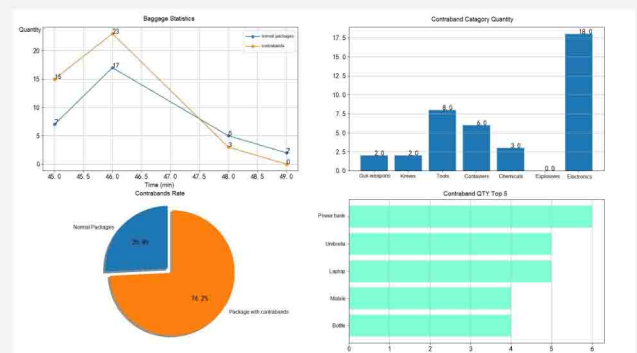
Extensive Contraband Range Supported

Support the identification of prohibited categories in the subway, airport, express delivery, exhibition, and public security law industries.



Friendly Using

Easy-to-use interface that requires no training to get started.



Schematic Diagram



From X-ray VGA output, through VGA->HDMI adapter, the screen imaging of the security inspection machine is output to the HDMI input of the video encoder, and the encoder outputs the video stream to the AI analyzer through USB3.0, and the result of the analysis then output to a separate screen, the entire process is free of docking with the X-ray security inspection machine.

Supported Contraband

Category	Knife-Weapon	Guns-Tools	Containers	Battery	Explosives	Dangerous Chemicals
Range	Dagger, Triangular knife, Spring knife, Single blade knife, Double edge knife, Triangular edge knife, Bayonet, Folding knife, Jumping knife, Fruit knife, Scissors, Kitchen knife, Paper cutter. Blunt, Wrench, File, Pliers, Axe, Saw, Screwdriver, Awl, Lock Knife, Dart, Hammer, Multi-section whip, Nunchaku	Pistol, Rifle, Submachine gun, Machine gun, Riot gun, Sample gun, Prop gun, Starting gun, Simulation gun, Cymbal, Shotgun, Tear gas, Electric shock, Handcuffs, Batons, Police whip	Thermos cup, Bottled liquid	Battery, Power bank, Mobile	Explosives, Firecrackers, Bullets, Fireworks, Ammunition, Matches, Strong magnetics, Detonating tubes, Fuses, Detonators, Lighters	Toxic, Corrosive, Electrolyte, Acid, Strong oxidant, Solid alcohol, Atomic carbon, Sulfuric acid, Anti-rust lubricant, Paint, Liquefied petroleum gas, Fire gas, Solid alcohol, Alcohol, Descaling Lubricant, Kill Insecticide, Car spray paint, Spray glue/gel water, Toilet water, Insecticide, Perfume, Moisturizing spray, Shampoo, Miniature fire extinguisher
Recognition Rate	85%	83%	85%	88%	87%	86%
Accuracy	89%	85%	88%	91%	87%	80%

Software Interface

Real-time Inspection
Today's detections: 3 Today's contraband: 3

Status: Connected
9/28/2019, 3:05:47 PM

